

**Mouse Insrr Antibody (C-term)**  
**Affinity Purified Rabbit Polyclonal Antibody (Pab)**  
**Catalog # AP14784B****Specification**

---

**Mouse Insrr Antibody (C-term) - Product Information**

Application	WB,E
Primary Accession	<a href="#">O9WTL4</a>
Other Accession	<a href="#">Q64716</a> , <a href="#">NP_035962.2</a>
Reactivity	Human, Mouse
Predicted	Rat
Host	Rabbit
Clonality	Polyclonal
Isotype	Rabbit IgG
Calculated MW	144875
Antigen Region	1228-1255

**Mouse Insrr Antibody (C-term) - Additional Information****Gene ID** 23920**Other Names**

Insulin receptor-related protein, IRR, IR-related receptor, Insulin receptor-related protein alpha chain, Insulin receptor-related protein beta chain, Insrr, Irr

**Target/Specificity**

This Mouse Insrr antibody is generated from rabbits immunized with a KLH conjugated synthetic peptide between 1228-1255 amino acids from the C-terminal region of mouse Insrr.

**Dilution**

WB~~1:1000

**Format**

Purified polyclonal antibody supplied in PBS with 0.09% (W/V) sodium azide. This antibody is purified through a protein A column, followed by peptide affinity purification.

**Storage**

Maintain refrigerated at 2-8°C for up to 2 weeks. For long term storage store at -20°C in small aliquots to prevent freeze-thaw cycles.

**Precautions**

Mouse Insrr Antibody (C-term) is for research use only and not for use in diagnostic or therapeutic procedures.

**Mouse Insrr Antibody (C-term) - Protein Information****Name** Insrr

### Synonyms Irr

**Function** Receptor with tyrosine-protein kinase activity. Functions as a pH sensing receptor which is activated by increased extracellular pH. Activates an intracellular signaling pathway that involves IRS1 and AKT1/PKB.

### Cellular Location

Membrane; Single-pass type I membrane protein

### Tissue Location

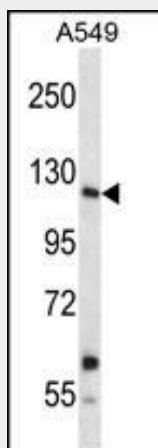
Highly expressed in the islets as well as in pancreatic beta-cells.

### Mouse Insrr Antibody (C-term) - Protocols

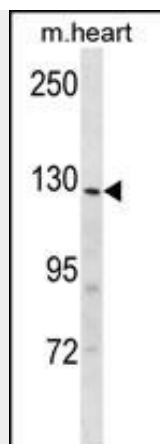
Provided below are standard protocols that you may find useful for product applications.

- [Western Blot](#)
- [Blocking Peptides](#)
- [Dot Blot](#)
- [Immunohistochemistry](#)
- [Immunofluorescence](#)
- [Immunoprecipitation](#)
- [Flow Cytometry](#)
- [Cell Culture](#)

### Mouse Insrr Antibody (C-term) - Images



Mouse Insrr Antibody (C-term) (Cat. #AP14784b) western blot analysis in A549 cell line lysates (35ug/lane). This demonstrates the Insrr antibody detected the Insrr protein (arrow).



Mouse Insrr Antibody (C-term) (Cat. #AP14784b) western blot analysis in mouse heart tissue lysates (35ug/lane). This demonstrates the Insrr antibody detected the Insrr protein (arrow).

#### **Mouse Insrr Antibody (C-term) - Background**

This receptor probably binds an insulin related protein and has a tyrosine-protein kinase activity. It phosphorylates the insulin receptor substrates IRS-1 and IRS-2.

#### **Mouse Insrr Antibody (C-term) - References**

Hanke, S., et al. Mol. Cell Proteomics 8(3):519-534(2009)  
Hoffman, B.G., et al. Genome Biol. 9 (6), R99 (2008) :  
Nef, S., et al. Nature 426(6964):291-295(2003)  
Kitamura, T., et al. Mol. Cell. Biol. 21(16):5624-5630(2001)  
Tsuji, T., et al. Exp. Anim. 50(4):359-360(2001)