

A2M Antibody (N-term)
Affinity Purified Rabbit Polyclonal Antibody (Pab)
Catalog # AP14789a**Specification**

A2M Antibody (N-term) - Product Information

Application	WB,E
Primary Accession	P01023
Other Accession	Q7SIH1 , NP_000005.2
Reactivity	Human
Predicted	Bovine
Host	Rabbit
Clonality	Polyclonal
Isotype	Rabbit IgG
Calculated MW	163291
Antigen Region	93-120

A2M Antibody (N-term) - Additional Information**Gene ID 2****Other Names**

Alpha-2-macroglobulin, Alpha-2-M, C3 and PZP-like alpha-2-macroglobulin domain-containing protein 5, A2M, CPAMD5

Target/Specificity

This A2M antibody is generated from rabbits immunized with a KLH conjugated synthetic peptide between 93-120 amino acids from the N-terminal region of human A2M.

Dilution

WB~~1:1000

E~~Use at an assay dependent concentration.

Format

Purified polyclonal antibody supplied in PBS with 0.09% (W/V) sodium azide. This antibody is purified through a protein A column, followed by peptide affinity purification.

Storage

Maintain refrigerated at 2-8°C for up to 2 weeks. For long term storage store at -20°C in small aliquots to prevent freeze-thaw cycles.

Precautions

A2M Antibody (N-term) is for research use only and not for use in diagnostic or therapeutic procedures.

A2M Antibody (N-term) - Protein Information

Name A2M

Synonyms CPAMD5

Function Is able to inhibit all four classes of proteinases by a unique 'trapping' mechanism. This protein has a peptide stretch, called the 'bait region' which contains specific cleavage sites for different proteinases. When a proteinase cleaves the bait region, a conformational change is induced in the protein which traps the proteinase. The entrapped enzyme remains active against low molecular weight substrates (activity against high molecular weight substrates is greatly reduced). Following cleavage in the bait region, a thioester bond is hydrolyzed and mediates the covalent binding of the protein to the proteinase.

Cellular Location

Secreted.

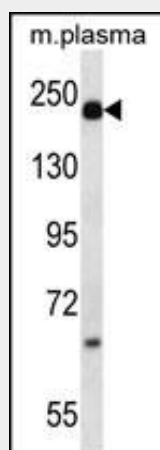
Tissue Location

Secreted in plasma..

A2M Antibody (N-term) - Protocols

Provided below are standard protocols that you may find useful for product applications.

- [Western Blot](#)
- [Blocking Peptides](#)
- [Dot Blot](#)
- [Immunohistochemistry](#)
- [Immunofluorescence](#)
- [Immunoprecipitation](#)
- [Flow Cytometry](#)
- [Cell Culture](#)

A2M Antibody (N-term) - Images

A2M Antibody (N-term) (Cat. #AP14789a) western blot analysis in mouse plasma lysates (35ug/lane). This demonstrates the A2M antibody detected the A2M protein (arrow).

A2M Antibody (N-term) - Background

Alpha-2-macroglobulin is a protease inhibitor and cytokine transporter. It inhibits many proteases, including trypsin, thrombin and collagenase. A2M is implicated in Alzheimer disease (AD) due to its ability to mediate the clearance and degradation of

A-beta, the major component of beta-amyloid deposits. [provided by RefSeq].

A2M Antibody (N-term) - References

Bailey, S.D., et al. Diabetes Care 33(10):2250-2253(2010)
Bruno, E., et al. Neurosci. Lett. 482(2):112-116(2010)
Nalpas, B., et al. Gut 59(8):1120-1126(2010)
Song, H., et al. Neurosci. Lett. 479(2):143-145(2010)
Seriramalu, R., et al. Electrophoresis 31(14):2388-2395(2010)