

ALDH8A1 Antibody (C-term)
Affinity Purified Rabbit Polyclonal Antibody (Pab)
Catalog # AP1479B

Specification

ALDH8A1 Antibody (C-term) - Product Information

Application	WB,E
Primary Accession	O9H2A2
Reactivity	Mouse
Host	Rabbit
Clonality	Polyclonal
Isotype	Rabbit IgG
Antigen Region	386-416

ALDH8A1 Antibody (C-term) - Additional Information

Gene ID 64577

Other Names

Aldehyde dehydrogenase family 8 member A1, 121-, Aldehyde dehydrogenase 12, ALDH8A1, ALDH12

Target/Specificity

This ALDH8A1 antibody is generated from rabbits immunized with a KLH conjugated synthetic peptide between 386-416 amino acids from the C-terminal region of human ALDH8A1.

Dilution

WB~~1:2000

E~~Use at an assay dependent concentration.

Format

Purified polyclonal antibody supplied in PBS with 0.09% (W/V) sodium azide. This antibody is purified through a protein A column, followed by peptide affinity purification.

Storage

Maintain refrigerated at 2-8°C for up to 2 weeks. For long term storage store at -20°C in small aliquots to prevent freeze-thaw cycles.

Precautions

ALDH8A1 Antibody (C-term) is for research use only and not for use in diagnostic or therapeutic procedures.

ALDH8A1 Antibody (C-term) - Protein Information

Name ALDH8A1 ([HGNC:15471](#))

Synonyms ALDH12

Function Catalyzes the NAD-dependent oxidation of 2-aminomuconic semialdehyde of the kynurenine metabolic pathway in L-tryptophan degradation.

Cellular Location

Cytoplasm.

Tissue Location

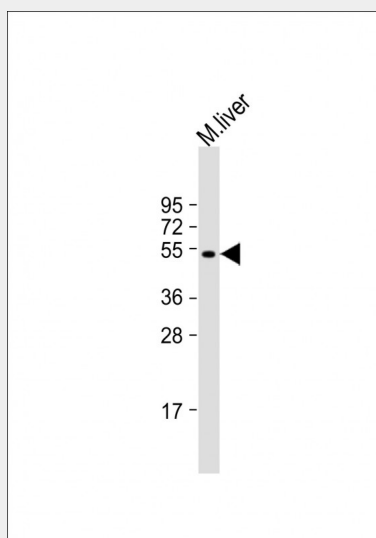
Highly expressed in adult kidney and liver. Detected at lower levels in fetal liver and kidney

ALDH8A1 Antibody (C-term) - Protocols

Provided below are standard protocols that you may find useful for product applications.

- [Western Blot](#)
- [Blocking Peptides](#)
- [Dot Blot](#)
- [Immunohistochemistry](#)
- [Immunofluorescence](#)
- [Immunoprecipitation](#)
- [Flow Cytometry](#)
- [Cell Culture](#)

ALDH8A1 Antibody (C-term) - Images



Anti-ALDH8A1 Antibody (C-term) at 1:2000 dilution + mouse liver lysate Lysates/proteins at 20 µg per lane. Secondary Goat Anti-Rabbit IgG, (H+L), Peroxidase conjugated at 1/10000 dilution. Predicted band size : 53 kDa Blocking/Dilution buffer: 5% NFDM/TBST.

ALDH8A1 Antibody (C-term) - Background

ALDH8A1 belongs to the aldehyde dehydrogenases family of proteins. It plays a role in a pathway of 9-cis-retinoic acid biosynthesis in vivo. This enzyme converts 9-cis-retinal into the retinoid X receptor ligand 9-cis-retinoic acid, and has approximately 40-fold higher activity with 9-cis-retinal than with all-trans-retinal. Therefore, it is the first known aldehyde dehydrogenase to show a preference for 9-cis-retinal relative to all-trans-retinal.

ALDH8A1 Antibody (C-term) - References

Lin,M.,J. Biol. Chem. 275 (51), 40106-40112 (2000)