

**WHSC2 Antibody (Center)**  
**Affinity Purified Rabbit Polyclonal Antibody (Pab)**  
**Catalog # AP14802c**

**Specification**

---

**WHSC2 Antibody (Center) - Product Information**

Application	WB,E
Primary Accession	<a href="#">O9H3P2</a>
Other Accession	<a href="#">O8BG30</a> , <a href="#">NP_005654.3</a>
Reactivity	Human
Predicted	Mouse
Host	Rabbit
Clonality	Polyclonal
Isotype	Rabbit IgG
Calculated MW	57277
Antigen Region	251-279

**WHSC2 Antibody (Center) - Additional Information**

**Gene ID** 7469

**Other Names**

Negative elongation factor A, NELF-A, Wolf-Hirschhorn syndrome candidate 2 protein, NELFA, WHSC2

**Target/Specificity**

This WHSC2 antibody is generated from rabbits immunized with a KLH conjugated synthetic peptide between 251-279 amino acids from the Central region of human WHSC2.

**Dilution**

WB~~1:1000

E~~Use at an assay dependent concentration.

**Format**

Purified polyclonal antibody supplied in PBS with 0.09% (W/V) sodium azide. This antibody is purified through a protein A column, followed by peptide affinity purification.

**Storage**

Maintain refrigerated at 2-8°C for up to 2 weeks. For long term storage store at -20°C in small aliquots to prevent freeze-thaw cycles.

**Precautions**

WHSC2 Antibody (Center) is for research use only and not for use in diagnostic or therapeutic procedures.

**WHSC2 Antibody (Center) - Protein Information**

**Name** NELFA

## Synonyms WHSC2

**Function** Essential component of the NELF complex, a complex that negatively regulates the elongation of transcription by RNA polymerase II. The NELF complex, which acts via an association with the DSIF complex and causes transcriptional pausing, is counteracted by the P-TEFb kinase complex.

## Cellular Location

Nucleus.

## Tissue Location

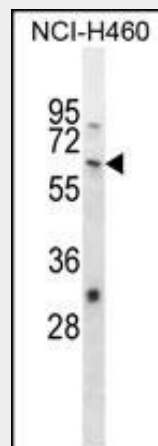
Ubiquitous. Expressed in heart, brain, placenta, liver, skeletal muscle, kidney and pancreas. Expressed at lower level in adult lung. Expressed in fetal brain, lung, liver and kidney

## WHSC2 Antibody (Center) - Protocols

Provided below are standard protocols that you may find useful for product applications.

- [Western Blot](#)
- [Blocking Peptides](#)
- [Dot Blot](#)
- [Immunohistochemistry](#)
- [Immunofluorescence](#)
- [Immunoprecipitation](#)
- [Flow Cytometry](#)
- [Cell Culture](#)

## WHSC2 Antibody (Center) - Images



WHSC2 Antibody (Center) (Cat. #AP14802c) western blot analysis in NCI-H460 cell line lysates (35ug/lane). This demonstrates the WHSC2 antibody detected the WHSC2 protein (arrow).

## WHSC2 Antibody (Center) - Background

This gene is expressed ubiquitously with higher levels in fetal than in adult tissues. It encodes a protein sharing 93% sequence identity with the mouse protein. Wolf-Hirschhorn syndrome (WHS) is a malformation syndrome associated with a hemizygous deletion of the distal short arm of chromosome 4. This gene is mapped to the 165 kb WHS critical region, and may play a role in

the phenotype of the WHS or Pitt-Rogers-Danks syndrome. The encoded protein is found to be capable of reacting with HLA-A2-restricted and tumor-specific cytotoxic T lymphocytes, suggesting a target for use in specific immunotherapy for a large number of cancer patients. This protein has also been shown to be a member of the NELF (negative elongation factor) protein complex that participates in the regulation of RNA polymerase II transcription elongation.

#### **WHSC2 Antibody (Center) - References**

Rose, J.E., et al. Mol. Med. 16 (7-8), 247-253 (2010) :  
Narita, T., et al. Mol. Cell 26(3):349-365(2007)  
Olsen, J.V., et al. Cell 127(3):635-648(2006)  
Beausoleil, S.A., et al. Nat. Biotechnol. 24(10):1285-1292(2006)  
Ping, Y.H., et al. J. Biol. Chem. 276(16):12951-12958(2001)