

**LAT2 Antibody (Center)**  
**Affinity Purified Rabbit Polyclonal Antibody (Pab)**  
**Catalog # AP14803c****Specification**

---

**LAT2 Antibody (Center) - Product Information**

Application	WB,E
Primary Accession	<a href="#">O9GZY6</a>
Other Accession	<a href="#">NP_054865.2</a> , <a href="#">NP_115852.1</a>
Reactivity	Human
Host	Rabbit
Clonality	Polyclonal
Isotype	Rabbit IgG
Calculated MW	26550
Antigen Region	107-135

**LAT2 Antibody (Center) - Additional Information****Gene ID** 7462**Other Names**

Linker for activation of T-cells family member 2, Linker for activation of B-cells, Membrane-associated adapter molecule, Non-T-cell activation linker, Williams-Beuren syndrome chromosomal region 15 protein, Williams-Beuren syndrome chromosomal region 5 protein, LAT2, LAB, NTAL, WBS15, WBSCR15, WBSCR5

**Target/Specificity**

This LAT2 antibody is generated from rabbits immunized with a KLH conjugated synthetic peptide between 107-135 amino acids from the Central region of human LAT2.

**Dilution**

WB~~1:1000

E~~Use at an assay dependent concentration.

**Format**

Purified polyclonal antibody supplied in PBS with 0.09% (W/V) sodium azide. This antibody is purified through a protein A column, followed by peptide affinity purification.

**Storage**

Maintain refrigerated at 2-8°C for up to 2 weeks. For long term storage store at -20°C in small aliquots to prevent freeze-thaw cycles.

**Precautions**

LAT2 Antibody (Center) is for research use only and not for use in diagnostic or therapeutic procedures.

**LAT2 Antibody (Center) - Protein Information**

**Name** LAT2

**Synonyms** LAB, NTAL, WBS15, WBSCR15, WBSCR5

**Function** Involved in FCER1 (high affinity immunoglobulin epsilon receptor)-mediated signaling in mast cells. May also be involved in BCR (B-cell antigen receptor)-mediated signaling in B-cells and FCGR1 (high affinity immunoglobulin gamma Fc receptor I)-mediated signaling in myeloid cells. Couples activation of these receptors and their associated kinases with distal intracellular events through the recruitment of GRB2.

**Cellular Location**

Cell membrane; Single-pass type III membrane protein Note=Present in lipid rafts

**Tissue Location**

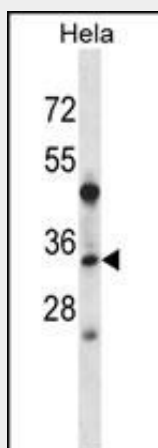
Highly expressed in spleen, peripheral blood lymphocytes, and germinal centers of lymph nodes. Also expressed in placenta, lung, pancreas and small intestine. Present in B-cells, NK cells and monocytes. Absent from T-cells (at protein level)

**LAT2 Antibody (Center) - Protocols**

Provided below are standard protocols that you may find useful for product applications.

- [Western Blot](#)
- [Blocking Peptides](#)
- [Dot Blot](#)
- [Immunohistochemistry](#)
- [Immunofluorescence](#)
- [Immunoprecipitation](#)
- [Flow Cytometry](#)
- [Cell Culture](#)

**LAT2 Antibody (Center) - Images**



LAT2 Antibody (Center) (Cat. #AP14803c) western blot analysis in HeLa cell line lysates (35ug/lane). This demonstrates the LAT2 antibody detected the LAT2 protein (arrow).

**LAT2 Antibody (Center) - Background**

This gene is one of the contiguous genes at 7q11.23 commonly deleted in Williams syndrome, a multisystem developmental

disorder. This gene consists of at least 14 exons, and its alternative splicing generates 3 transcript variants, all encoding the same protein.

#### **LAT2 Antibody (Center) - References**

Rieke, C., et al. Cell. Signal. 22(3):395-403(2010)  
Luo, X., et al. J. Clin. Endocrinol. Metab. 94(11):4533-4539(2009)  
Saito, A., et al. J. Hum. Genet. 54(6):317-323(2009)  
Svojgr, K., et al. Immunol. Lett. 122(2):185-192(2009)  
Whittaker, G.C., et al. Blood 112(7):2869-2877(2008)