

SLC45A3 Antibody (Center)
Affinity Purified Rabbit Polyclonal Antibody (Pab)
Catalog # AP14808c

Specification

SLC45A3 Antibody (Center) - Product Information

Application	WB,E
Primary Accession	O96JT2
Other Accession	O8K0H7 , NP_149093.1
Reactivity	Mouse
Host	Rabbit
Clonality	Polyclonal
Isotype	Rabbit IgG
Calculated MW	59323
Antigen Region	290-319

SLC45A3 Antibody (Center) - Additional Information

Gene ID 85414

Other Names

Solute carrier family 45 member 3, Prostate cancer-associated protein 6, Prostein, SLC45A3, PCANAP6, PRST

Target/Specificity

This SLC45A3 antibody is generated from rabbits immunized with a KLH conjugated synthetic peptide between 290-319 amino acids from the Central region of human SLC45A3.

Dilution

WB~~1:1000

E~~Use at an assay dependent concentration.

Format

Purified polyclonal antibody supplied in PBS with 0.09% (W/V) sodium azide. This antibody is purified through a protein A column, followed by peptide affinity purification.

Storage

Maintain refrigerated at 2-8°C for up to 2 weeks. For long term storage store at -20°C in small aliquots to prevent freeze-thaw cycles.

Precautions

SLC45A3 Antibody (Center) is for research use only and not for use in diagnostic or therapeutic procedures.

SLC45A3 Antibody (Center) - Protein Information

Name SLC45A3 ([HGNC:8642](#))

Synonyms PCANAP6, PRST

Function Proton-associated sucrose transporter. May be able to transport also glucose and fructose.

Cellular Location

Membrane; Multi-pass membrane protein

Tissue Location

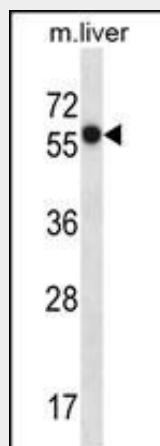
Prostate specific. Expressed in all prostatic glandular cells. Expressed both in normal and cancerous prostates

SLC45A3 Antibody (Center) - Protocols

Provided below are standard protocols that you may find useful for product applications.

- [Western Blot](#)
- [Blocking Peptides](#)
- [Dot Blot](#)
- [Immunohistochemistry](#)
- [Immunofluorescence](#)
- [Immunoprecipitation](#)
- [Flow Cytometry](#)
- [Cell Culture](#)

SLC45A3 Antibody (Center) - Images



SLC45A3 Antibody (Center) (Cat. #AP14808c) western blot analysis in mouse liver tissue lysates (35ug/lane). This demonstrates the SLC45A3 antibody detected the SLC45A3 protein (arrow).

SLC45A3 Antibody (Center) - Background

Belongs to the glycoside-pentoside-hexuronide (GPH) cation symporter transporter (TC 2.A.2) family.

SLC45A3 Antibody (Center) - References

Esgueva, R., et al. Mod. Pathol. 23(4):539-546(2010)
Satake, W., et al. Nat. Genet. 41(12):1303-1307(2009)
Pflueger, D., et al. Neoplasia 11(8):804-811(2009)

Maher, C.A., et al. Nature 458(7234):97-101(2009)
Musiyenko, A., et al. J. Mol. Med. 86(3):313-322(2008)