

PTPRG Antibody (Center)
Affinity Purified Rabbit Polyclonal Antibody (Pab)
Catalog # AP14809c

Specification

PTPRG Antibody (Center) - Product Information

Application	WB,E
Primary Accession	P23470
Other Accession	NP_002832.3
Reactivity	Mouse
Host	Rabbit
Clonality	Polyclonal
Isotype	Rabbit IgG
Calculated MW	162003
Antigen Region	671-700

PTPRG Antibody (Center) - Additional Information

Gene ID 5793

Other Names

Receptor-type tyrosine-protein phosphatase gamma, Protein-tyrosine phosphatase gamma, R-PTP-gamma, PTPRG, PTPG

Target/Specificity

This PTPRG antibody is generated from rabbits immunized with a KLH conjugated synthetic peptide between 671-700 amino acids from the Central region of human PTPRG.

Dilution

WB~~1:1000

E~~Use at an assay dependent concentration.

Format

Purified polyclonal antibody supplied in PBS with 0.09% (W/V) sodium azide. This antibody is purified through a protein A column, followed by peptide affinity purification.

Storage

Maintain refrigerated at 2-8°C for up to 2 weeks. For long term storage store at -20°C in small aliquots to prevent freeze-thaw cycles.

Precautions

PTPRG Antibody (Center) is for research use only and not for use in diagnostic or therapeutic procedures.

PTPRG Antibody (Center) - Protein Information

Name PTPRG

Synonyms PTPG**Function** Possesses tyrosine phosphatase activity.**Cellular Location**

Membrane; Single-pass type I membrane protein

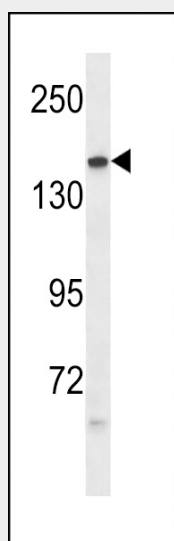
Tissue Location

Found in a variety of tissues.

PTPRG Antibody (Center) - Protocols

Provided below are standard protocols that you may find useful for product applications.

- [Western Blot](#)
- [Blocking Peptides](#)
- [Dot Blot](#)
- [Immunohistochemistry](#)
- [Immunofluorescence](#)
- [Immunoprecipitation](#)
- [Flow Cytometry](#)
- [Cell Culture](#)

PTPRG Antibody (Center) - Images

PTPRG Antibody (Center) (Cat. #AP14809c) western blot analysis in mouse lung tissue lysates (35ug/lane). This demonstrates the PTPRG antibody detected the PTPRG protein (arrow).

PTPRG Antibody (Center) - Background

The protein encoded by this gene is a member of the protein tyrosine phosphatase (PTP) family. PTPs are known to be signaling molecules that regulate a variety of cellular processes including cell growth, differentiation, mitotic cycle, and oncogenic transformation. This PTP possesses an extracellular region, a single transmembrane region, and two tandem intracytoplasmic catalytic domains, and thus represents a

receptor-type PTP. The extracellular region of this PTP contains a carbonic anhydrase-like (CAH) domain, which is also found in the extracellular region of PTPRBETA/ZETA. This gene is located in a chromosomal region that is frequently deleted in renal cell carcinoma and lung carcinoma, thus is thought to be a candidate tumor suppressor gene.

PTPRG Antibody (Center) - References

Rose, J.E., et al. Mol. Med. 16 (7-8), 247-253 (2010) :
Shu, S.T., et al. Anticancer Res. 30(6):1937-1946(2010)
Joslyn, G., et al. Alcohol. Clin. Exp. Res. 34(5):800-812(2010)
Bouyain, S., et al. Proc. Natl. Acad. Sci. U.S.A. 107(6):2443-2448(2010)
Shi, J., et al. Mol. Psychiatry (2010) In press :