

**PTX3 Antibody (Center)**  
**Affinity Purified Rabbit Polyclonal Antibody (Pab)**  
**Catalog # AP14812c**

**Specification**

---

**PTX3 Antibody (Center) - Product Information**

Application	WB,E
Primary Accession	<a href="#">P26022</a>
Other Accession	<a href="#">NP_002843.2</a>
Reactivity	Human
Host	Rabbit
Clonality	Polyclonal
Isotype	Rabbit IgG
Calculated MW	41976
Antigen Region	120-148

**PTX3 Antibody (Center) - Additional Information**

**Gene ID** 5806

**Other Names**

Pentraxin-related protein PTX3, Pentaxin-related protein PTX3, Tumor necrosis factor alpha-induced protein 5, TNF alpha-induced protein 5, Tumor necrosis factor-inducible gene 14 protein, TSG-14, PTX3, TNFAIP5, TSG14

**Target/Specificity**

This PTX3 antibody is generated from rabbits immunized with a KLH conjugated synthetic peptide between 120-148 amino acids from the Central region of human PTX3.

**Dilution**

WB~~1:1000

E~~Use at an assay dependent concentration.

**Format**

Purified polyclonal antibody supplied in PBS with 0.09% (W/V) sodium azide. This antibody is purified through a protein A column, followed by peptide affinity purification.

**Storage**

Maintain refrigerated at 2-8°C for up to 2 weeks. For long term storage store at -20°C in small aliquots to prevent freeze-thaw cycles.

**Precautions**

PTX3 Antibody (Center) is for research use only and not for use in diagnostic or therapeutic procedures.

**PTX3 Antibody (Center) - Protein Information**

**Name** PTX3 ([HGNC:9692](#))

**Synonyms** TNFAIP5, TSG14

**Function** Plays a role in the regulation of innate resistance to pathogens, inflammatory reactions, possibly clearance of self- components and female fertility.

**Cellular Location**

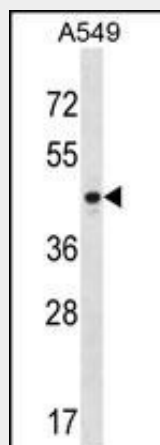
Secreted.

**PTX3 Antibody (Center) - Protocols**

Provided below are standard protocols that you may find useful for product applications.

- [Western Blot](#)
- [Blocking Peptides](#)
- [Dot Blot](#)
- [Immunohistochemistry](#)
- [Immunofluorescence](#)
- [Immunoprecipitation](#)
- [Flow Cytometry](#)
- [Cell Culture](#)

**PTX3 Antibody (Center) - Images**



PTX3 Antibody (Center) (Cat. #AP14812c) western blot analysis in A549 cell line lysates (35ug/lane). This demonstrates the PTX3 antibody detected the PTX3 protein (arrow).

**PTX3 Antibody (Center) - Background**

PTX3 plays a role in the regulation of innate resistance to pathogens, inflammatory reactions, possibly clearance of self-components and female fertility (By similarity).

**PTX3 Antibody (Center) - References**

Bailey, S.D., et al. Diabetes Care 33(10):2250-2253(2010)  
Yilmaz, M.I., et al. Clin J Am Soc Nephrol 5(7):1174-1181(2010)  
Haverkamp, M.H., et al. Int. J. Pediatr. Otorhinolaryngol. 74(7):752-754(2010)  
Hollan, I., et al. Arthritis Care Res (Hoboken) 62(3):378-385(2010)  
Sciacca, P., et al. Front Biosci (Elite Ed) 2, 805-809 (2010) :