

LY86 Antibody (C-term)
Affinity Purified Rabbit Polyclonal Antibody (Pab)
Catalog # AP14826B

Specification

LY86 Antibody (C-term) - Product Information

Application	WB,E
Primary Accession	O95711
Other Accession	O88188 , NP_004262.1
Reactivity	Human, Mouse
Host	Rabbit
Clonality	Polyclonal
Isotype	Rabbit IgG
Calculated MW	17906
Antigen Region	98-127

LY86 Antibody (C-term) - Additional Information

Gene ID 9450

Other Names

Lymphocyte antigen 86, Ly-86, Protein MD-1, LY86, MD1

Target/Specificity

This LY86 antibody is generated from rabbits immunized with a KLH conjugated synthetic peptide between 98-127 amino acids from the C-terminal region of human LY86.

Dilution

WB~~1:1000

E~~Use at an assay dependent concentration.

Format

Purified polyclonal antibody supplied in PBS with 0.09% (W/V) sodium azide. This antibody is purified through a protein A column, followed by peptide affinity purification.

Storage

Maintain refrigerated at 2-8°C for up to 2 weeks. For long term storage store at -20°C in small aliquots to prevent freeze-thaw cycles.

Precautions

LY86 Antibody (C-term) is for research use only and not for use in diagnostic or therapeutic procedures.

LY86 Antibody (C-term) - Protein Information

Name LY86

Synonyms MD1

Function May cooperate with CD180 and TLR4 to mediate the innate immune response to bacterial lipopolysaccharide (LPS) and cytokine production. Important for efficient CD180 cell surface expression (By similarity).

Cellular Location

Secreted, extracellular space. Note=Associated with CD180 at the cell surface

Tissue Location

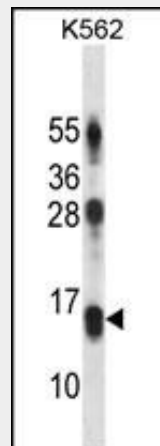
Highly expressed in B-cells, monocytes and tonsil.

LY86 Antibody (C-term) - Protocols

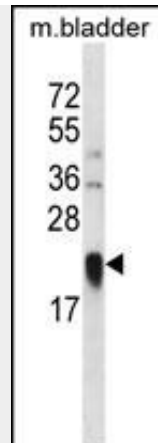
Provided below are standard protocols that you may find useful for product applications.

- [Western Blot](#)
- [Blocking Peptides](#)
- [Dot Blot](#)
- [Immunohistochemistry](#)
- [Immunofluorescence](#)
- [Immunoprecipitation](#)
- [Flow Cytometry](#)
- [Cell Culture](#)

LY86 Antibody (C-term) - Images



LY86 Antibody (C-term) (Cat. #AP14826b) western blot analysis in K562 cell line lysates (35ug/lane). This demonstrates the LY86 antibody detected the LY86 protein (arrow).



LY86 Antibody (C-term) (Cat. #AP14826b) western blot analysis in mouse bladder tissue lysates (35ug/lane). This demonstrates the LY86 antibody detected the LY86 protein (arrow).

LY86 Antibody (C-term) - Background

LY86 may cooperate with CD180 and TLR4 to mediate the innate immune response to bacterial lipopolysaccharide (LPS) and cytokine production. Important for efficient CD180 cell surface expression (By similarity).

LY86 Antibody (C-term) - References

- Davila, S., et al. *Genes Immun.* 11(3):232-238(2010)
- Shyn, S.I., et al. *Mol. Psychiatry* (2009) In press :
- Lee, S.W., et al. *J Microbiol Immunol Infect* 41(6):445-449(2008)
- Wang, J.Y., et al. *Int. J. Immunogenet.* 34(6):407-412(2007)
- Lamesch, P., et al. *Genomics* 89(3):307-315(2007)