

**CDH10 Antibody (N-term)**  
**Affinity Purified Rabbit Polyclonal Antibody (Pab)**  
**Catalog # AP1482c**

**Specification**

---

**CDH10 Antibody (N-term) - Product Information**

Application	FC, WB, IHC-P,E
Primary Accession	<a href="#">Q9Y6N8</a>
Reactivity	Human
Host	Rabbit
Clonality	Polyclonal
Isotype	Rabbit IgG
Calculated MW	88451
Antigen Region	25-55

**CDH10 Antibody (N-term) - Additional Information**

**Gene ID** 1008

**Other Names**

Cadherin-10, T2-cadherin, CDH10

**Target/Specificity**

This CDH10 antibody is generated from rabbits immunized with a KLH conjugated synthetic peptide between 25-55 amino acids from the N-terminal region of human CDH10.

**Dilution**

FC~~1:10~50

WB~~1:1000

IHC-P~~1:10~50

E~~Use at an assay dependent concentration.

**Format**

Purified polyclonal antibody supplied in PBS with 0.09% (W/V) sodium azide. This antibody is purified through a protein A column, followed by peptide affinity purification.

**Storage**

Maintain refrigerated at 2-8°C for up to 2 weeks. For long term storage store at -20°C in small aliquots to prevent freeze-thaw cycles.

**Precautions**

CDH10 Antibody (N-term) is for research use only and not for use in diagnostic or therapeutic procedures.

**CDH10 Antibody (N-term) - Protein Information**

**Name** CDH10

**Function** Cadherins are calcium-dependent cell adhesion proteins. They preferentially interact with themselves in a homophilic manner in connecting cells; cadherins may thus contribute to the sorting of heterogeneous cell types.

**Cellular Location**

Cell membrane; Single-pass type I membrane protein

**Tissue Location**

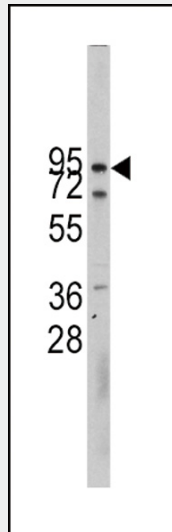
Predominantly expressed in brain. Also found in adult and fetal kidney. Very low levels detected in prostate and fetal lung.

**CDH10 Antibody (N-term) - Protocols**

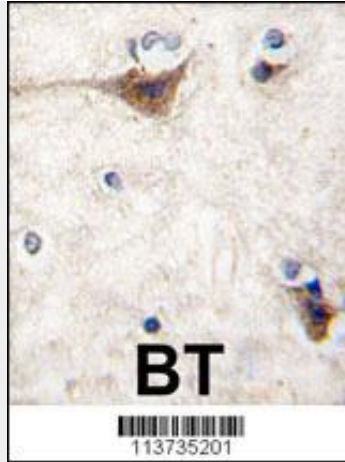
Provided below are standard protocols that you may find useful for product applications.

- [Western Blot](#)
- [Blocking Peptides](#)
- [Dot Blot](#)
- [Immunohistochemistry](#)
- [Immunofluorescence](#)
- [Immunoprecipitation](#)
- [Flow Cytometry](#)
- [Cell Culture](#)

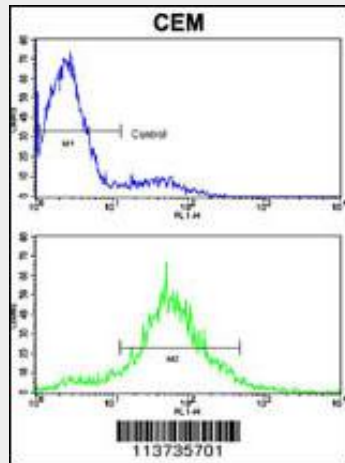
**CDH10 Antibody (N-term) - Images**



Western blot analysis of CDH10 Antibody (N-term) in CEM cell line lysates (35ug/lane). CDH10 (arrow) was detected using the purified Pab.



Formalin-fixed and paraffin-embedded human brain tissue reacted with CDH10 antibody (N-term), which was peroxidase-conjugated to the secondary antibody, followed by DAB staining. This data demonstrates the use of this antibody for immunohistochemistry; clinical relevance has not been evaluated.



Flow cytometric analysis of CEM cells using Cadherin 10 (CDH10) Antibody (N-term) (bottom histogram) compared to a negative control cell (top histogram). FITC-conjugated goat-anti-rabbit secondary antibodies were used for the analysis.

### CDH10 Antibody (N-term) - Background

CDH10 is a type II classical cadherin from the cadherin superfamily, integral membrane proteins that mediate calcium-dependent cell-cell adhesion. Mature cadherin proteins are composed of a large N-terminal extracellular domain, a single membrane-spanning domain, and a small, highly conserved C-terminal cytoplasmic domain. The extracellular domain consists of 5 subdomains, each containing a cadherin motif, and appears to determine the specificity of the protein's homophilic cell adhesion activity. Type II (atypical) cadherins are defined based on their lack of a HAV cell adhesion recognition sequence specific to type I cadherins. This particular cadherin is predominantly expressed in brain and is putatively involved in synaptic adhesions, axon outgrowth and guidance.

### CDH10 Antibody (N-term) - References

Kools, P., FEBS Lett. 452 (3), 328-334 (1999)