

**Mouse Frk Antibody (C-term)**  
**Affinity Purified Rabbit Polyclonal Antibody (Pab)**  
**Catalog # AP14842b****Specification**

---

**Mouse Frk Antibody (C-term) - Product Information**

Application	WB,E
Primary Accession	<a href="#">O922K9</a>
Other Accession	<a href="#">O62662</a> , <a href="#">NP_034367.2</a> , <a href="#">NP_001153016.1</a>
Reactivity	Mouse
Predicted	Rat
Host	Rabbit
Clonality	Polyclonal
Isotype	Rabbit IgG
Calculated MW	58844
Antigen Region	464-491

**Mouse Frk Antibody (C-term) - Additional Information****Gene ID** 14302**Other Names**

Tyrosine-protein kinase FRK, Beta-cell Src-homology tyrosine kinase, BSK, FYN-related kinase, Intestine tyrosine kinase, Frk, Bsk, Iyk

**Target/Specificity**

This Mouse Frk antibody is generated from rabbits immunized with a KLH conjugated synthetic peptide between 464-491 amino acids from the C-terminal region of mouse Frk.

**Dilution**

WB~~1:1000

**Format**

Purified polyclonal antibody supplied in PBS with 0.09% (W/V) sodium azide. This antibody is purified through a protein A column, followed by peptide affinity purification.

**Storage**

Maintain refrigerated at 2-8°C for up to 2 weeks. For long term storage store at -20°C in small aliquots to prevent freeze-thaw cycles.

**Precautions**

Mouse Frk Antibody (C-term) is for research use only and not for use in diagnostic or therapeutic procedures.

**Mouse Frk Antibody (C-term) - Protein Information****Name** Frk

**Synonyms** Bsk, Iyk

**Function** Non-receptor tyrosine-protein kinase that negatively regulates cell proliferation. Positively regulates PTEN protein stability through phosphorylation of PTEN on 'Tyr-336', which in turn prevents its ubiquitination and degradation, possibly by reducing its binding to NEDD4. May function as a tumor suppressor (By similarity).

**Cellular Location**

Cytoplasm. Nucleus. Note=Predominantly found in the nucleus, with a small fraction found in the cell periphery.

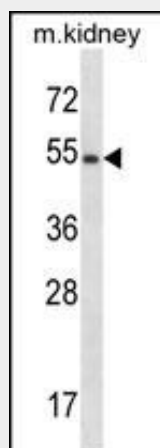
**Tissue Location**

Expressed in intestinal tract, fetal and adult islets of Langerhans, kidney, liver and lung

**Mouse Frk Antibody (C-term) - Protocols**

Provided below are standard protocols that you may find useful for product applications.

- [Western Blot](#)
- [Blocking Peptides](#)
- [Dot Blot](#)
- [Immunohistochemistry](#)
- [Immunofluorescence](#)
- [Immunoprecipitation](#)
- [Flow Cytometry](#)
- [Cell Culture](#)

**Mouse Frk Antibody (C-term) - Images**

Mouse Frk Antibody (C-term) (Cat. #AP14842b) western blot analysis in mouse kidney tissue lysates (35ug/lane). This demonstrates the Frk antibody detected the Frk protein (arrow).

**Mouse Frk Antibody (C-term) - Background**

Positively regulates PTEN protein stability through phosphorylation of PTEN on 'Tyr-336', which in turn prevents its ubiquitination and degradation possibly by reducing its binding to NEDD4. May function as a tumor suppressor (By similarity).

**Mouse Frk Antibody (C-term) - References**

Akerblom, B., et al. Mol. Cell. Endocrinol. 270 (1-2), 73-78 (2007) :  
Nishimura, M., et al. DNA Res. 11(5):315-323(2004)  
Sharov, A.A., et al. PLoS Biol. 1 (3), E74 (2003) :  
Cowen, M.S., et al. Alcohol. Clin. Exp. Res. 27(8):1213-1219(2003)  
Serfas, M.S., et al. Oncol. Res. 13 (6-10), 409-419 (2003) :