

**PAQR8 Antibody (C-term)**  
**Affinity Purified Rabbit Polyclonal Antibody (Pab)**  
**Catalog # AP14849b**

**Specification**

---

**PAQR8 Antibody (C-term) - Product Information**

Application	WB,E
Primary Accession	<a href="#">Q8TEZ7</a>
Other Accession	<a href="#">NP_588608.1</a>
Reactivity	Human, Mouse
Host	Rabbit
Clonality	Polyclonal
Isotype	Rabbit IgG
Calculated MW	40464
Antigen Region	326-354

**PAQR8 Antibody (C-term) - Additional Information**

**Gene ID** 85315

**Other Names**

Membrane progesterin receptor beta, mPR beta, Lysosomal membrane protein in brain 1, Progesterin and adipoQ receptor family member 8, Progesterin and adipoQ receptor family member VIII, PAQR8, C6orf33, LMPB1, MPRB

**Target/Specificity**

This PAQR8 antibody is generated from rabbits immunized with a KLH conjugated synthetic peptide between 326-354 amino acids from the C-terminal region of human PAQR8.

**Dilution**

WB~~1:1000

**Format**

Purified polyclonal antibody supplied in PBS with 0.09% (W/V) sodium azide. This antibody is purified through a protein A column, followed by peptide affinity purification.

**Storage**

Maintain refrigerated at 2-8°C for up to 2 weeks. For long term storage store at -20°C in small aliquots to prevent freeze-thaw cycles.

**Precautions**

PAQR8 Antibody (C-term) is for research use only and not for use in diagnostic or therapeutic procedures.

**PAQR8 Antibody (C-term) - Protein Information**

**Name** PAQR8 ([HGNC:15708](#))

**Function** Plasma membrane progesterone (P4) receptor coupled to G proteins (PubMed:[23763432](#)). Seems to act through a G(i) mediated pathway (PubMed:[23763432](#)). May be involved in oocyte maturation (By similarity). Also binds dehydroepiandrosterone (DHEA), pregnanolone, pregnenolone and allopregnanolone (PubMed:[23161870](#)).

**Cellular Location**

Cell membrane; Multi-pass membrane protein. Note=Colocalizes with a lysosomal protein CTSD/cathepsin D.

**Tissue Location**

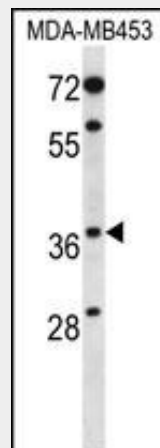
Highly expressed in the hypothalamus (PubMed:23161870). Also expressed in spinal cord, kidney and testis

**PAQR8 Antibody (C-term) - Protocols**

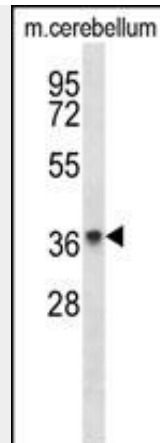
Provided below are standard protocols that you may find useful for product applications.

- [Western Blot](#)
- [Blocking Peptides](#)
- [Dot Blot](#)
- [Immunohistochemistry](#)
- [Immunofluorescence](#)
- [Immunoprecipitation](#)
- [Flow Cytometry](#)
- [Cell Culture](#)

**PAQR8 Antibody (C-term) - Images**



PAQR8 Antibody (C-term) (Cat. #AP14849b) western blot analysis in MDA-MB453 cell line lysates (35ug/lane). This demonstrates the PAQR8 antibody detected the PAQR8 protein (arrow).



PAQR8 Antibody (C-term) (Cat. #AP14849b) western blot analysis in mouse cerebellum tissue lysates (35ug/lane). This demonstrates the PAQR8 antibody detected the PAQR8 protein (arrow).

#### **PAQR8 Antibody (C-term) - Background**

PAQR8 is steroid membrane receptor. Binds progesterone. May be involved in oocyte maturation (By similarity).

#### **PAQR8 Antibody (C-term) - References**

- Smith, J.L., et al. Steroids 73(11):1160-1173(2008)
- Lamesch, P., et al. Genomics 89(3):307-315(2007)
- Tang, Y.T., et al. J. Mol. Evol. 61(3):372-380(2005)
- Mungall, A.J., et al. Nature 425(6960):805-811(2003)
- Hammes, S.R. Proc. Natl. Acad. Sci. U.S.A. 100(5):2168-2170(2003)