

TSPY Antibody (C-term)
Affinity Purified Rabbit Polyclonal Antibody (Pab)
Catalog # AP14884b**Specification**

TSPY Antibody (C-term) - Product Information

Application	IHC-P, WB,E
Primary Accession	Q01534
Other Accession	P0CW01 , P0CW00 , P0CV99 , P0CV98 , A6NKD2 , NP_001071165.2 , XP_002344239.1
Reactivity	Human
Host	Rabbit
Clonality	Polyclonal
Isotype	Rabbit IgG
Antigen Region	274-303

TSPY Antibody (C-term) - Additional Information**Gene ID** 100289087;7258;728137**Other Names**

Testis-specific Y-encoded protein 1, Cancer/testis antigen 78, CT78, TSPY1, TSPY

Target/Specificity

This TSPY antibody is generated from rabbits immunized with a KLH conjugated synthetic peptide between 274-303 amino acids from the C-terminal region of human TSPY.

Dilution

IHC-P~~1:10~50

WB~~1:1000

E~~Use at an assay dependent concentration.

Format

Purified polyclonal antibody supplied in PBS with 0.09% (W/V) sodium azide. This antibody is purified through a protein A column, followed by peptide affinity purification.

Storage

Maintain refrigerated at 2-8°C for up to 2 weeks. For long term storage store at -20°C in small aliquots to prevent freeze-thaw cycles.

Precautions

TSPY Antibody (C-term) is for research use only and not for use in diagnostic or therapeutic procedures.

TSPY Antibody (C-term) - Protein Information**Name** TSPY1

Synonyms TSPY

Function May be involved in sperm differentiation and proliferation.

Cellular Location

Cytoplasm. Nucleus. Note=Predominantly cytoplasmic. Also found in nucleus

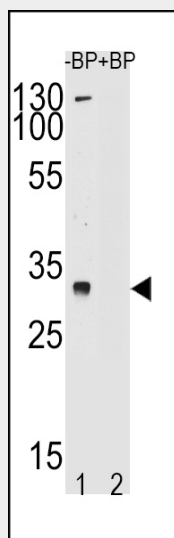
Tissue Location

Specifically expressed in testicular tissues. Isoform 1 and isoform 2 are expressed in spermatogonia and spermatocytes. Found in early testicular carcinoma in situ, spermatogonial cells in testicular tissues of 46,X,Y female and in prostate cancer cell lines.

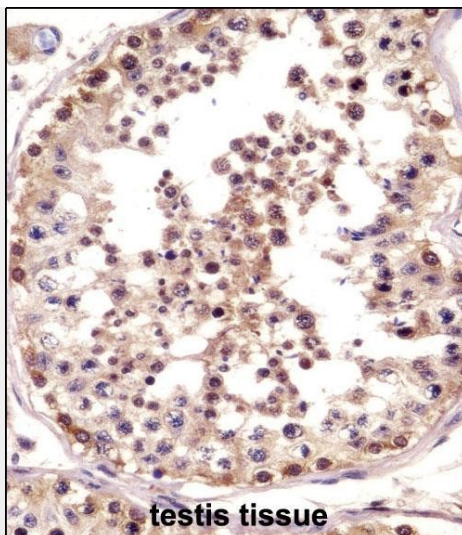
TSPY Antibody (C-term) - Protocols

Provided below are standard protocols that you may find useful for product applications.

- [Western Blot](#)
- [Blocking Peptides](#)
- [Dot Blot](#)
- [Immunohistochemistry](#)
- [Immunofluorescence](#)
- [Immunoprecipitation](#)
- [Flow Cytometry](#)
- [Cell Culture](#)

TSPY Antibody (C-term) - Images

Western blot analysis of TSPY Antibody (C-term) (Cat. #AP14884b) pre-incubated without(lane 1) and with(lane 2) blocking peptide in LNCAP cell line lysate. TSPY (arrow) was detected using the purified TSPY Antibody (C-term).



TSPY Antibody (C-term) (AP14884b) immunohistochemistry analysis in formalin fixed and paraffin embedded human testis tissue followed by peroxidase conjugation of the secondary antibody and DAB staining. This data demonstrates the use of TSPY Antibody (C-term) for immunohistochemistry. Clinical relevance has not been evaluated.

TSPY Antibody (C-term) - Background

TSPY may be involved in sperm differentiation and proliferation.

TSPY Antibody (C-term) - References

Kimura, K., et al. Genome Res. 16(1):55-65(2006)
Strausberg, R.L., et al. Proc. Natl. Acad. Sci. U.S.A. 99(26):16899-16903(2002)