

**HYAL1 Antibody (C-term)**  
**Affinity Purified Rabbit Polyclonal Antibody (Pab)**  
**Catalog # AP14886b**

**Specification**

---

**HYAL1 Antibody (C-term) - Product Information**

Application	IHC-P, WB,E
Primary Accession	<a href="#">Q12794</a>
Other Accession	<a href="#">NP_695013.1</a> , <a href="#">NP_695017.1</a> , <a href="#">NP_009296.1</a>
Reactivity	Human
Host	Rabbit
Clonality	Polyclonal
Isotype	Rabbit IgG
Calculated MW	48368
Antigen Region	280-309

**HYAL1 Antibody (C-term) - Additional Information**

**Gene ID** 3373

**Other Names**

Hyaluronidase-1, Hyal-1, Hyaluronoglucosaminidase-1, Lung carcinoma protein 1, LuCa-1, HYAL1, LUCA1

**Target/Specificity**

This HYAL1 antibody is generated from rabbits immunized with a KLH conjugated synthetic peptide between 280-309 amino acids from the C-terminal region of human HYAL1.

**Dilution**

IHC-P~~1:10~50

WB~~1:1000

E~~Use at an assay dependent concentration.

**Format**

Purified polyclonal antibody supplied in PBS with 0.09% (W/V) sodium azide. This antibody is purified through a protein A column, followed by peptide affinity purification.

**Storage**

Maintain refrigerated at 2-8°C for up to 2 weeks. For long term storage store at -20°C in small aliquots to prevent freeze-thaw cycles.

**Precautions**

HYAL1 Antibody (C-term) is for research use only and not for use in diagnostic or therapeutic procedures.

**HYAL1 Antibody (C-term) - Protein Information**

**Name** HYAL1

**Synonyms** LUCA1

**Function** May have a role in promoting tumor progression. May block the TGF $\beta$ 1-enhanced cell growth.

**Cellular Location**

Secreted. Lysosome

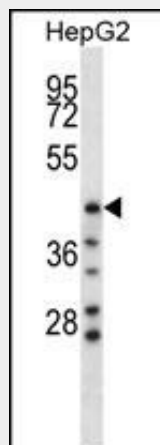
**Tissue Location**

Highly expressed in the liver, kidney and heart. Weakly expressed in lung, placenta and skeletal muscle. No expression detected in adult brain. Isoform 1 is expressed only in bladder and prostate cancer cells, G2/G3 bladder tumor tissues and lymph node specimens showing tumor invasive tumors cells. Isoform 3, isoform 4, isoform 5 and isoform 6 are expressed in normal bladder and bladder tumor tissues.

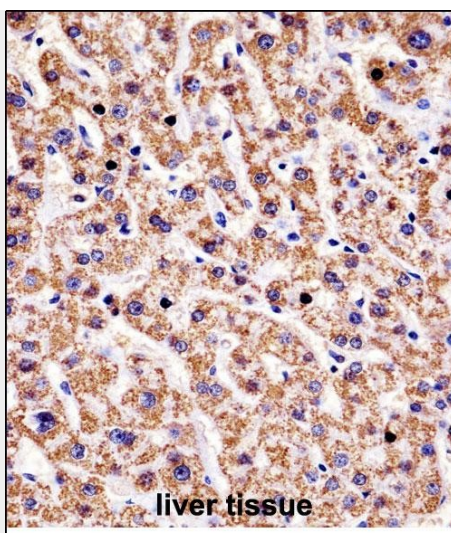
**HYAL1 Antibody (C-term) - Protocols**

Provided below are standard protocols that you may find useful for product applications.

- [Western Blot](#)
- [Blocking Peptides](#)
- [Dot Blot](#)
- [Immunohistochemistry](#)
- [Immunofluorescence](#)
- [Immunoprecipitation](#)
- [Flow Cytometry](#)
- [Cell Culture](#)

**HYAL1 Antibody (C-term) - Images**

HYAL1 Antibody (C-term) (Cat. #AP14886b) western blot analysis in HepG2 cell line lysates (35ug/lane). This demonstrates the HYAL1 antibody detected the HYAL1 protein (arrow).



HYAL1 Antibody (C-term) (AP14886b) immunohistochemistry analysis in formalin fixed and paraffin embedded human liver tissue followed by peroxidase conjugation of the secondary antibody and DAB staining. This data demonstrates the use of HYAL1 Antibody (C-term) for immunohistochemistry. Clinical relevance has not been evaluated.

#### **HYAL1 Antibody (C-term) - Background**

This gene encodes a lysosomal hyaluronidase. Hyaluronidases intracellularly degrade hyaluronan, one of the major glycosaminoglycans of the extracellular matrix. Hyaluronan is thought to be involved in cell proliferation, migration and differentiation. This enzyme is active at an acidic pH and is the major hyaluronidase in plasma. Mutations in this gene are associated with mucopolysaccharidosis type IX, or hyaluronidase deficiency. The gene is one of several related genes in a region of chromosome 3p21.3 associated with tumor suppression. Multiple transcript variants encoding different isoforms have been found for this gene.

#### **HYAL1 Antibody (C-term) - References**

Lanktree, M.B., et al. Blood 116(12):2160-2163(2010)  
Gasingirwa, M.C., et al. Biochem. J. 430(2):305-313(2010)  
Tzuman, Y.C., et al. Neoplasia 12(1):51-60(2010)  
Jugessur, A., et al. PLoS ONE 5 (7), E11493 (2010) :  
Wang, X.Y., et al. Chin. Med. J. 122(11):1300-1304(2009)

#### **HYAL1 Antibody (C-term) - Citations**

- [The suppressive role of HYAL1 and HYAL2 in the metastasis of colorectal cancer.](#)