

ZSCAN22 Antibody (Center)
Affinity Purified Rabbit Polyclonal Antibody (Pab)
Catalog # AP14889c**Specification**

ZSCAN22 Antibody (Center) - Product Information

Application	WB,E
Primary Accession	P10073
Other Accession	NP_862829.1
Reactivity	Human
Host	Rabbit
Clonality	Polyclonal
Isotype	Rabbit IgG
Calculated MW	54561
Antigen Region	198-227

ZSCAN22 Antibody (Center) - Additional Information**Gene ID** 342945**Other Names**

Zinc finger and SCAN domain-containing protein 22, Krueppel-related zinc finger protein 2, Protein HKR2, Zinc finger protein 50, ZSCAN22, HKR2, ZNF50

Target/Specificity

This ZSCAN22 antibody is generated from rabbits immunized with a KLH conjugated synthetic peptide between 198-227 amino acids from the Central region of human ZSCAN22.

Dilution

WB~~1:1000

E~~Use at an assay dependent concentration.

Format

Purified polyclonal antibody supplied in PBS with 0.09% (W/V) sodium azide. This antibody is purified through a protein A column, followed by peptide affinity purification.

Storage

Maintain refrigerated at 2-8°C for up to 2 weeks. For long term storage store at -20°C in small aliquots to prevent freeze-thaw cycles.

Precautions

ZSCAN22 Antibody (Center) is for research use only and not for use in diagnostic or therapeutic procedures.

ZSCAN22 Antibody (Center) - Protein Information**Name** ZSCAN22

Synonyms HKR2, ZNF50

Function May be involved in transcriptional regulation.

Cellular Location

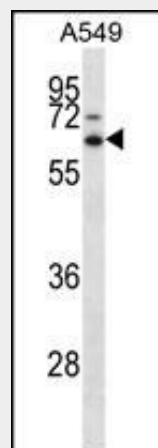
Nucleus {ECO:0000255|PROSITE-ProRule:PRU00187}.

ZSCAN22 Antibody (Center) - Protocols

Provided below are standard protocols that you may find useful for product applications.

- [Western Blot](#)
- [Blocking Peptides](#)
- [Dot Blot](#)
- [Immunohistochemistry](#)
- [Immunofluorescence](#)
- [Immunoprecipitation](#)
- [Flow Cytometry](#)
- [Cell Culture](#)

ZSCAN22 Antibody (Center) - Images



ZSCAN22 Antibody (Center) (Cat. #AP14889c) western blot analysis in A549 cell line lysates (35ug/lane). This demonstrates the ZSCAN22 antibody detected the ZSCAN22 protein (arrow).

ZSCAN22 Antibody (Center) - Background

ZSCAN22 may be involved in transcriptional regulation.

ZSCAN22 Antibody (Center) - References

- Matsuoka, S., et al. Science 316(5828):1160-1166(2007)
Matsumoto, N., et al. Genomics 36(1):220-221(1996)
Lichter, P., et al. Genomics 13(4):999-1007(1992)
Bray, P., et al. Proc. Natl. Acad. Sci. U.S.A. 88(21):9563-9567(1991)
Ruppert, J.M., et al. Mol. Cell. Biol. 8(8):3104-3113(1988)