

TRIM2 Antibody (C-term)
Affinity Purified Rabbit Polyclonal Antibody (Pab)
Catalog # AP14891b**Specification**

TRIM2 Antibody (C-term) - Product Information

Application	WB,E
Primary Accession	Q9C040
Other Accession	D3ZQG6 , Q9ESN6 , A4IF63 , NP_056086.2 , NP_001123539.1
Reactivity	Human
Predicted	Bovine, Mouse, Rat
Host	Rabbit
Clonality	Polyclonal
Isotype	Rabbit IgG
Calculated MW	81530
Antigen Region	592-621

TRIM2 Antibody (C-term) - Additional Information**Gene ID** 23321**Other Names**

Tripartite motif-containing protein 2, 632-, E3 ubiquitin-protein ligase TRIM2, RING finger protein 86, TRIM2, KIAA0517, RNF86

Target/Specificity

This TRIM2 antibody is generated from rabbits immunized with a KLH conjugated synthetic peptide between 592-621 amino acids from the C-terminal region of human TRIM2.

Dilution

WB~~1:1000

E~~Use at an assay dependent concentration.

Format

Purified polyclonal antibody supplied in PBS with 0.09% (W/V) sodium azide. This antibody is purified through a protein A column, followed by peptide affinity purification.

Storage

Maintain refrigerated at 2-8°C for up to 2 weeks. For long term storage store at -20°C in small aliquots to prevent freeze-thaw cycles.

Precautions

TRIM2 Antibody (C-term) is for research use only and not for use in diagnostic or therapeutic procedures.

TRIM2 Antibody (C-term) - Protein Information

Name TRIM2

Synonyms KIAA0517, RNF86

Function UBE2D1-dependent E3 ubiquitin-protein ligase that mediates the ubiquitination of NEFL and of phosphorylated BCL2L11. Plays a neuroprotective function. May play a role in neuronal rapid ischemic tolerance. Plays a role in antiviral immunity and limits New World arenavirus infection independently of its ubiquitin ligase activity (PubMed:[24068738](#)).

Cellular Location

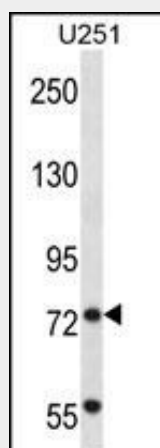
Cytoplasm.

TRIM2 Antibody (C-term) - Protocols

Provided below are standard protocols that you may find useful for product applications.

- [Western Blot](#)
- [Blocking Peptides](#)
- [Dot Blot](#)
- [Immunohistochemistry](#)
- [Immunofluorescence](#)
- [Immunoprecipitation](#)
- [Flow Cytometry](#)
- [Cell Culture](#)

TRIM2 Antibody (C-term) - Images



TRIM2 Antibody (C-term) (Cat. #AP14891b) western blot analysis in U251 cell line lysates (35ug/lane). This demonstrates the TRIM2 antibody detected the TRIM2 protein (arrow).

TRIM2 Antibody (C-term) - Background

The protein encoded by this gene is a member of the tripartite motif (TRIM) family. The TRIM motif includes three zinc-binding domains, a RING, a B-box type 1 and a B-box type 2, and a coiled-coil region. The protein localizes to cytoplasmic filaments. Its function has not been identified. [provided by RefSeq].

TRIM2 Antibody (C-term) - References

Rose, J. Phd, et al. Mol. Med. (2010) In press :
Ohkawa, N., et al. J. Neurochem. 78(1):75-87(2001)
Reymond, A., et al. EMBO J. 20(9):2140-2151(2001)