

DVL2 Antibody (C-term)
Affinity Purified Rabbit Polyclonal Antibody (Pab)
Catalog # AP14900b

Specification

DVL2 Antibody (C-term) - Product Information

Application	WB,E
Primary Accession	O14641
Other Accession	Q60838 , NP_004413.1
Reactivity	Human
Predicted	Mouse
Host	Rabbit
Clonality	Polyclonal
Isotype	Rabbit IgG
Calculated MW	78948
Antigen Region	588-617

DVL2 Antibody (C-term) - Additional Information

Gene ID 1856

Other Names

Segment polarity protein dishevelled homolog DVL-2, Dishevelled-2, DSH homolog 2, DVL2

Target/Specificity

This DVL2 antibody is generated from rabbits immunized with a KLH conjugated synthetic peptide between 588-617 amino acids from the C-terminal region of human DVL2.

Dilution

WB~~1:1000

E~~Use at an assay dependent concentration.

Format

Purified polyclonal antibody supplied in PBS with 0.09% (W/V) sodium azide. This antibody is purified through a protein A column, followed by peptide affinity purification.

Storage

Maintain refrigerated at 2-8°C for up to 2 weeks. For long term storage store at -20°C in small aliquots to prevent freeze-thaw cycles.

Precautions

DVL2 Antibody (C-term) is for research use only and not for use in diagnostic or therapeutic procedures.

DVL2 Antibody (C-term) - Protein Information

Name DVL2

Function Plays a role in the signal transduction pathways mediated by multiple Wnt genes (PubMed:[24616100](#)). Participates both in canonical and non-canonical Wnt signaling by binding to the cytoplasmic C- terminus of frizzled family members and transducing the Wnt signal to down-stream effectors. Promotes internalization and degradation of frizzled proteins upon Wnt signaling.

Cellular Location

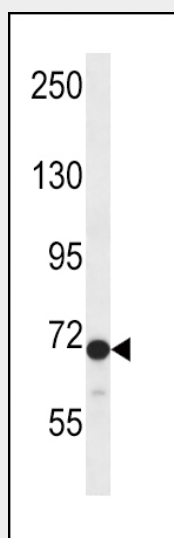
Cell membrane {ECO:0000250|UniProtKB:Q60838}; Peripheral membrane protein {ECO:0000250|UniProtKB:Q60838}; Cytoplasmic side {ECO:0000250|UniProtKB:Q60838}. Cytoplasm, cytosol. Cytoplasmic vesicle {ECO:0000250|UniProtKB:Q60838}. Nucleus
Note=Localizes at the cell membrane upon interaction with frizzled family members and promotes their internalization. Localizes to cytoplasmic puncta (By similarity). Interaction with FOXK1 and FOXK2 induces nuclear translocation (PubMed:25805136) {ECO:0000250|UniProtKB:Q60838, ECO:0000269|PubMed:24616100, ECO:0000269|PubMed:25805136}

DVL2 Antibody (C-term) - Protocols

Provided below are standard protocols that you may find useful for product applications.

- [Western Blot](#)
- [Blocking Peptides](#)
- [Dot Blot](#)
- [Immunohistochemistry](#)
- [Immunofluorescence](#)
- [Immunoprecipitation](#)
- [Flow Cytometry](#)
- [Cell Culture](#)

DVL2 Antibody (C-term) - Images



DVL2 Antibody (C-term) (Cat. #AP14900b) western blot analysis in CEM cell line lysates (35ug/lane). This demonstrates the DVL2 antibody detected the DVL2 protein (arrow).

DVL2 Antibody (C-term) - Background

This gene encodes a member of the dishevelled (dsh) protein family. The vertebrate dsh proteins have approximately 40%

amino acid sequence similarity with *Drosophila* dsh. This gene encodes a 90-kD protein that undergoes posttranslational phosphorylation to form a 95-kD cytoplasmic protein, which may play a role in the signal transduction pathway mediated by multiple Wnt proteins. The mechanisms of dishevelled function in Wnt signaling are likely to be conserved among metazoans.

DVL2 Antibody (C-term) - References

Inkster, B., et al. *Neuroimage* 53(3):908-917(2010)
Kikuchi, K., et al. *EMBO J.* 29(20):3470-3483(2010)
Bailey, S.D., et al. *Diabetes Care* 33(10):2250-2253(2010)
Gao, C., et al. *Nat. Cell Biol.* 12(8):781-790(2010)
Gnad, T., et al. *Mol. Cancer* 9, 31 (2010) :