

RBM5 Antibody (N-term)
Affinity Purified Rabbit Polyclonal Antibody (Pab)
Catalog # AP14901c**Specification**

RBM5 Antibody (N-term) - Product Information

Application	WB,E
Primary Accession	P52756
Other Accession	B2GV05 , Q91YE7 , Q1RMU5 , NP_005769.1
Reactivity	Human
Predicted	Bovine, Mouse, Rat
Host	Rabbit
Clonality	Polyclonal
Isotype	Rabbit IgG
Calculated MW	92154
Antigen Region	18-46

RBM5 Antibody (N-term) - Additional Information**Gene ID** 10181**Other Names**

RNA-binding protein 5, Protein G15, Putative tumor suppressor LUCA15, RNA-binding motif protein 5, Renal carcinoma antigen NY-REN-9, RBM5

Target/Specificity

This RBM5 antibody is generated from rabbits immunized with a KLH conjugated synthetic peptide between 18-46 amino acids from the N-terminal region of human RBM5.

Dilution

WB~~1:1000

E~~Use at an assay dependent concentration.

Format

Purified polyclonal antibody supplied in PBS with 0.09% (W/V) sodium azide. This antibody is purified through a protein A column, followed by peptide affinity purification.

Storage

Maintain refrigerated at 2-8°C for up to 2 weeks. For long term storage store at -20°C in small aliquots to prevent freeze-thaw cycles.

Precautions

RBM5 Antibody (N-term) is for research use only and not for use in diagnostic or therapeutic procedures.

RBM5 Antibody (N-term) - Protein Information**Name** RBM5

Function Component of the spliceosome A complex. Binds to ssRNA containing the consensus sequence 5'-AGGUAA-3' (PubMed:[21256132](#)). Regulates alternative splicing of a number of mRNAs. May modulate splice site pairing after recruitment of the U1 and U2 snRNPs to the 5' and 3' splice sites of the intron. May both positively and negatively regulate apoptosis by regulating the alternative splicing of several genes involved in this process, including FAS and CASP2/caspase-2. In the case of FAS, promotes exclusion of exon 6 thereby producing a soluble form of FAS that inhibits apoptosis. In the case of CASP2/caspase-2, promotes exclusion of exon 9 thereby producing a catalytically active form of CASP2/Caspase-2 that induces apoptosis.

Cellular Location

Nucleus.

Tissue Location

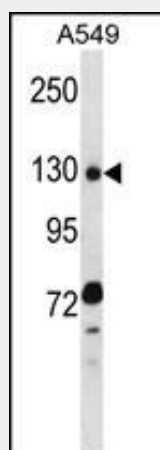
Isoform 5 is widely expressed in normal tissues and is expressed at increased levels in T-leukemic cell lines

RBM5 Antibody (N-term) - Protocols

Provided below are standard protocols that you may find useful for product applications.

- [Western Blot](#)
- [Blocking Peptides](#)
- [Dot Blot](#)
- [Immunohistochemistry](#)
- [Immunofluorescence](#)
- [Immunoprecipitation](#)
- [Flow Cytometry](#)
- [Cell Culture](#)

RBM5 Antibody (N-term) - Images



RBM5 Antibody (N-term) (Cat. #AP14901c) western blot analysis in A549 cell line lysates (35ug/lane). This demonstrates the RBM5 antibody detected the RBM5 protein (arrow).

RBM5 Antibody (N-term) - Background

Component of the spliceosome A complex. Regulates alternative splicing of a number of mRNAs. May modulate splice site pairing after recruitment of the U1 and U2 snRNPs to the 5' and 3' splice sites of the intron. May both positively and negatively regulate apoptosis by regulating the alternative splicing of several genes involved in this process, including FAS and CASP2/caspase-2. In

the case of FAS, promotes exclusion of exon 6 thereby producing a soluble form of FAS that inhibits apoptosis. In the case of CASP2/caspase-2, promotes exclusion of exon 9 thereby producing a catalytically active form of CASP2/Caspase-2 that induces apoptosis.

RBM5 Antibody (N-term) - References

Sugliani, M., et al. Plant Cell 22(6):1936-1946(2010)
Rintala-Maki, N.D., et al. Gene 445 (1-2), 7-16 (2009) :
Kotlajich, M.V., et al. Mol. Cell 32(2):162-164(2008)
Fushimi, K., et al. Proc. Natl. Acad. Sci. U.S.A. 105(41):15708-15713(2008)
Bonnal, S., et al. Mol. Cell 32(1):81-95(2008)