

**CTF1 Antibody (C-term)**  
**Affinity Purified Rabbit Polyclonal Antibody (Pab)**  
**Catalog # AP14905B****Specification**

---

**CTF1 Antibody (C-term) - Product Information**

Application	IHC-P, FC, WB,E
Primary Accession	<a href="#">Q16619</a>
Other Accession	<a href="#">NP_001321.1</a> , <a href="#">NP_001136016.1</a>
Reactivity	Human
Host	Rabbit
Clonality	Polyclonal
Isotype	Rabbit IgG
Calculated MW	21227
Antigen Region	166-194

**CTF1 Antibody (C-term) - Additional Information****Gene ID** 1489**Other Names**

Cardiotrophin-1, CT-1, CTF1

**Target/Specificity**

This CTF1 antibody is generated from rabbits immunized with a KLH conjugated synthetic peptide between 166-194 amino acids from the C-terminal region of human CTF1.

**Dilution**

IHC-P~~1:10~50

FC~~1:10~50

WB~~1:1000

E~~Use at an assay dependent concentration.

**Format**

Purified polyclonal antibody supplied in PBS with 0.09% (W/V) sodium azide. This antibody is purified through a protein A column, followed by peptide affinity purification.

**Storage**

Maintain refrigerated at 2-8°C for up to 2 weeks. For long term storage store at -20°C in small aliquots to prevent freeze-thaw cycles.

**Precautions**

CTF1 Antibody (C-term) is for research use only and not for use in diagnostic or therapeutic procedures.

**CTF1 Antibody (C-term) - Protein Information****Name** CTF1

**Function** Induces cardiac myocyte hypertrophy in vitro. Binds to and activates the ILST/gp130 receptor.

**Cellular Location**

Secreted.

**Tissue Location**

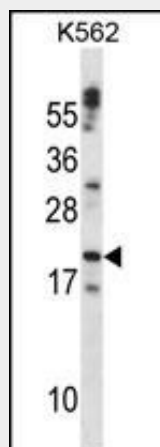
Highly expressed in heart, skeletal muscle, prostate and ovary. Lower levels in lung, kidney, pancreas, thymus, testis and small intestine. Little or no expression in brain, placenta, liver, spleen, colon or peripheral blood leukocytes

**CTF1 Antibody (C-term) - Protocols**

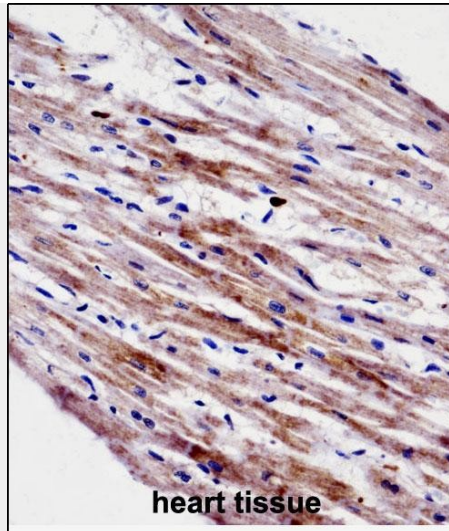
Provided below are standard protocols that you may find useful for product applications.

- [Western Blot](#)
- [Blocking Peptides](#)
- [Dot Blot](#)
- [Immunohistochemistry](#)
- [Immunofluorescence](#)
- [Immunoprecipitation](#)
- [Flow Cytometry](#)
- [Cell Culture](#)

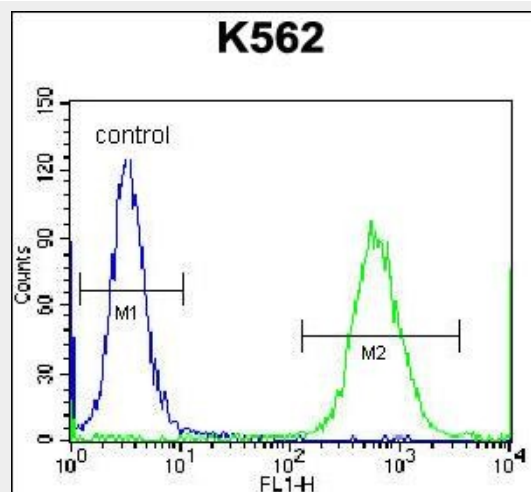
**CTF1 Antibody (C-term) - Images**



CTF1 Antibody (C-term) (Cat. #AP14905b) western blot analysis in K562 cell line lysates (35ug/lane). This demonstrates the CTF1 antibody detected the CTF1 protein (arrow).



CTF1 Antibody (C-term) (AP14905b) immunohistochemistry analysis in formalin fixed and paraffin embedded human heart tissue followed by peroxidase conjugation of the secondary antibody and DAB staining. This data demonstrates the use of CTF1 Antibody (C-term) for immunohistochemistry. Clinical relevance has not been evaluated.



CTF1 Antibody (C-term) (Cat. #AP14905b) flow cytometric analysis of K562 cells (right histogram) compared to a negative control cell (left histogram). FITC-conjugated donkey-anti-rabbit secondary antibodies were used for the analysis.

### CTF1 Antibody (C-term) - Background

The protein encoded by this gene is a secreted cytokine that induces cardiac myocyte hypertrophy in vitro. It has been shown to bind and activate the ILST/gp130 receptor. Two transcript variants encoding different isoforms have been found for this gene.

### CTF1 Antibody (C-term) - References

Robador, P.A., et al. J. Hypertens. (2010) In press :  
Bailey, S.D., et al. Diabetes Care (2010) In press :  
Limongelli, G., et al. Cytokine 50(3):245-247(2010)  
Zimmerman, R.S., et al. Genet. Med. 12(5):268-278(2010)  
Fritzenwanger, M., et al. Mediators Inflamm. 2009, 489802 (2009) :