

**Actin (ACTB/ACTC) Antibody (Center)**  
**Purified Rabbit Polyclonal Antibody (Pab)**  
**Catalog # AP1491c****Specification**

---

**Actin (ACTB/ACTC) Antibody (Center) - Product Information**

Application	IHC-P, WB,E
Primary Accession	<a href="#">P68032</a>
Other Accession	<a href="#">P60010</a> , <a href="#">P68136</a> , <a href="#">P68135</a> , <a href="#">P68137</a> , <a href="#">P68134</a> , <a href="#">P68133</a> , <a href="#">P68139</a> , <a href="#">P68138</a> , <a href="#">P63269</a> , <a href="#">P63268</a> , <a href="#">P63267</a> , <a href="#">P63270</a> , <a href="#">Q5E9B5</a> , <a href="#">A2BDB0</a> , <a href="#">P63259</a> , <a href="#">P63260</a> , <a href="#">P63261</a> , <a href="#">Q5ZMQ2</a> , <a href="#">P63258</a> , <a href="#">P04751</a> , <a href="#">P68035</a> , <a href="#">P68033</a> , <a href="#">P68034</a> , <a href="#">Q3ZC07</a> , <a href="#">Q93400</a> , <a href="#">P60711</a> , <a href="#">P29751</a> , <a href="#">Q6QAO1</a> , <a href="#">P60710</a> , <a href="#">Q4R561</a> , <a href="#">P60709</a> , <a href="#">P48975</a>
Reactivity	Human
Predicted	C.Elegans, Drosophila, Xenopus, Chicken, Bovine, Mouse, Rabbit, Rat, Zebrafish, Hamster, Horse, Monkey, Pig, Sheep, Yeast
Host	Rabbit
Clonality	Polyclonal
Isotype	Rabbit IgG
Calculated MW	42019
Antigen Region	189-218

**Actin (ACTB/ACTC) Antibody (Center) - Additional Information****Gene ID 70****Other Names**

Actin, alpha cardiac muscle 1, Alpha-cardiac actin, ACTC1, ACTC

**Target/Specificity**

This Actin (ACTB/ACTC) antibody is generated from rabbits immunized with a KLH conjugated synthetic peptide between 189-218 amino acids from the Central region of human Actin (ACTB/ACTC).

**Dilution**

IHC-P~~1:10~50

WB~~1:1000

E~~Use at an assay dependent concentration.

**Format**

Purified polyclonal antibody supplied in PBS with 0.09% (W/V) sodium azide. This antibody is prepared by Saturated Ammonium Sulfate (SAS) precipitation followed by dialysis against PBS.

**Storage**

Maintain refrigerated at 2-8°C for up to 2 weeks. For long term storage store at -20°C in small aliquots to prevent freeze-thaw cycles.

**Precautions**

Actin (ACTB/ACTC) Antibody (Center) is for research use only and not for use in diagnostic or therapeutic procedures.

**Actin (ACTB/ACTC) Antibody (Center) - Protein Information**

**Name** ACTC1

**Synonyms** ACTC

**Function** Actins are highly conserved proteins that are involved in various types of cell motility and are ubiquitously expressed in all eukaryotic cells.

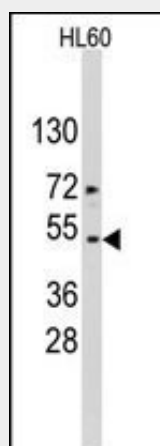
**Cellular Location**

Cytoplasm, cytoskeleton.

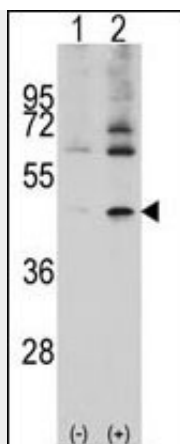
**Actin (ACTB/ACTC) Antibody (Center) - Protocols**

Provided below are standard protocols that you may find useful for product applications.

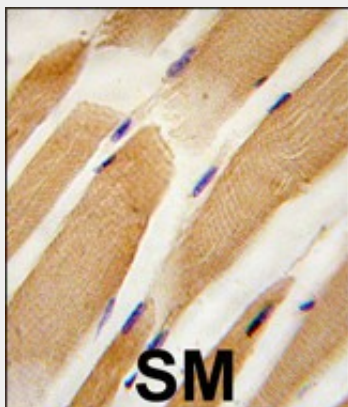
- [Western Blot](#)
- [Blocking Peptides](#)
- [Dot Blot](#)
- [Immunohistochemistry](#)
- [Immunofluorescence](#)
- [Immunoprecipitation](#)
- [Flow Cytometry](#)
- [Cell Culture](#)

**Actin (ACTB/ACTC) Antibody (Center) - Images**

Western blot analysis of ACTB/ACTC Antibody (Center) in HL60 cell line lysates (35ug/lane). Target protein (arrow) was detected using the purified Pab.



Western blot analysis of ACTB/ACTC (arrow) using rabbit polyclonal ACTB/ACTC Antibody (Center) (Cat.#AP1491a).293 cell lysates (2 ug/lane) either nontransfected (Lane 1) or transiently transfected with the ACTB/ACTC gene (Lane 2) (Origene Technologies).



Formalin-fixed and paraffin-embedded human skeletal muscle tissue reacted with ACTB/ACTC antibody (Center), which was peroxidase-conjugated to the secondary antibody, followed by DAB staining. This data demonstrates the use of this antibody for immunohistochemistry; clinical relevance has not been evaluated.

#### **Actin (ACTB/ACTC) Antibody (Center) - Background**

Actins are highly conserved proteins that are involved in cell motility, structure, and integrity. ACTB/ACTC are nonmuscle cytoskeletal actins and major constituents of the contractile apparatus. Defects in ACTB are a cause of juvenile-onset dystonia. Defects in ACTC have been associated with idiopathic dilated cardiomyopathy (IDC) and familial hypertrophic cardiomyopathy (FHC).

#### **Actin (ACTB/ACTC) Antibody (Center) - References**

Villebeck,L., Biochemistry 46 (44), 12639-12647 (2007)  
Avizienyte,E., Exp. Cell Res. 313 (15), 3175-3188 (2007)  
Bouldin,A.A., Muscle Nerve 35 (2), 254-258 (2007)