

CALCA/CT Antibody (C-term)
Affinity Purified Rabbit Polyclonal Antibody (Pab)
Catalog # AP14934b**Specification**

CALCA/CT Antibody (C-term) - Product Information

Application	WB,E
Primary Accession	P01258
Other Accession	NP_001732.1 , NP_001029124.1
Reactivity	Human
Host	Rabbit
Clonality	Polyclonal
Isotype	Rabbit IgG
Calculated MW	15467
Antigen Region	104-132

CALCA/CT Antibody (C-term) - Additional Information**Gene ID** 796**Other Names**

Calcitonin, Calcitonin, Katalcalcin, Calcitonin carboxyl-terminal peptide, CCP, PDN-21, CALCA, CALC1

Target/Specificity

This CALCA/CT antibody is generated from rabbits immunized with a KLH conjugated synthetic peptide between 104-132 amino acids from the C-terminal region of human CALCA/CT.

Dilution

WB~~1:1000

E~~Use at an assay dependent concentration.

Format

Purified polyclonal antibody supplied in PBS with 0.09% (W/V) sodium azide. This antibody is purified through a protein A column, followed by peptide affinity purification.

Storage

Maintain refrigerated at 2-8°C for up to 2 weeks. For long term storage store at -20°C in small aliquots to prevent freeze-thaw cycles.

Precautions

CALCA/CT Antibody (C-term) is for research use only and not for use in diagnostic or therapeutic procedures.

CALCA/CT Antibody (C-term) - Protein Information**Name** CALCA ([HGNC:1437](#))

Synonyms CALC1

Function [Calcitonin]: Calcitonin is a peptide hormone that causes a rapid but short-lived drop in the level of calcium and phosphate in blood by promoting the incorporation of those ions in the bones. Calcitonin function is mediated by the calcitonin receptor/CALCR and the CALCR-RAMP2 (AMYR2) receptor complex (PubMed:[35324283](#)).

Cellular Location

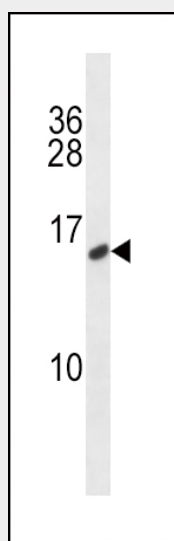
Secreted.

CALCA/CT Antibody (C-term) - Protocols

Provided below are standard protocols that you may find useful for product applications.

- [Western Blot](#)
- [Blocking Peptides](#)
- [Dot Blot](#)
- [Immunohistochemistry](#)
- [Immunofluorescence](#)
- [Immunoprecipitation](#)
- [Flow Cytometry](#)
- [Cell Culture](#)

CALCA/CT Antibody (C-term) - Images



CALCA/CT Antibody (C-term) (Cat. #AP14934b) western blot analysis in MDA-MB231 cell line lysates (35ug/lane). This demonstrates the CALCA/CT antibody detected the CALCA/CT protein (arrow).

CALCA/CT Antibody (C-term) - Background

This gene encodes the peptide hormones calcitonin, calcitonin gene-related peptide and katacalcin by tissue-specific alternative RNA splicing of the gene transcripts and cleavage of inactive precursor proteins. Calcitonin is involved in calcium regulation and acts to regulate phosphorus metabolism. Calcitonin gene-related peptide functions as a vasodilator while katacalcin is

a calcium-lowering peptide. Multiple transcript variants encoding different isoforms have been found for this gene.

CALCA/CT Antibody (C-term) - References

Giroux, S., et al. Bone 47(5):975-981(2010)
Bailey, S.D., et al. Diabetes Care 33(10):2250-2253(2010)
Lee, J.Y., et al. Korean J Lab Med 30(4):406-413(2010)
Giovannella, L., et al. Clin. Chem. Lab. Med. 48(8):1163-1165(2010)
Hatzistilianou, M. ScientificWorldJournal 10, 1941-1946 (2010) :