

ALPP Antibody (N-term)
Affinity Purified Rabbit Polyclonal Antibody (Pab)
Catalog # AP14937a**Specification**

ALPP Antibody (N-term) - Product Information

Application	IHC-P, WB,E
Primary Accession	P05187
Other Accession	P10696 , NP_001623.3
Reactivity	Human
Host	Rabbit
Clonality	Polyclonal
Isotype	Rabbit IgG
Calculated MW	57954
Antigen Region	56-83

ALPP Antibody (N-term) - Additional Information**Gene ID** 250**Other Names**

Alkaline phosphatase, placental type, Alkaline phosphatase Regan isozyme, Placental alkaline phosphatase 1, PLAP-1, ALPP, PLAP

Target/Specificity

This ALPP antibody is generated from rabbits immunized with a KLH conjugated synthetic peptide between 56-83 amino acids from the N-terminal region of human ALPP.

Dilution

IHC-P~~1:10~50

WB~~1:1000

E~~Use at an assay dependent concentration.

Format

Purified polyclonal antibody supplied in PBS with 0.09% (W/V) sodium azide. This antibody is purified through a protein A column, followed by peptide affinity purification.

Storage

Maintain refrigerated at 2-8°C for up to 2 weeks. For long term storage store at -20°C in small aliquots to prevent freeze-thaw cycles.

Precautions

ALPP Antibody (N-term) is for research use only and not for use in diagnostic or therapeutic procedures.

ALPP Antibody (N-term) - Protein Information**Name** ALPP ([HGNC:439](#))

Function Alkaline phosphatase that can hydrolyze various phosphate compounds.

Cellular Location

Cell membrane; Lipid-anchor, GPI-anchor

Tissue Location

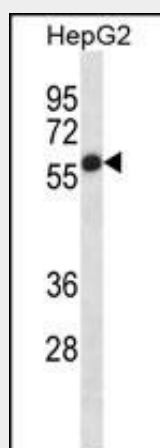
Detected in placenta (at protein level).

ALPP Antibody (N-term) - Protocols

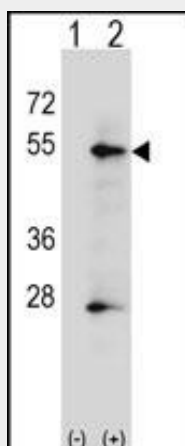
Provided below are standard protocols that you may find useful for product applications.

- [Western Blot](#)
- [Blocking Peptides](#)
- [Dot Blot](#)
- [Immunohistochemistry](#)
- [Immunofluorescence](#)
- [Immunoprecipitation](#)
- [Flow Cytometry](#)
- [Cell Culture](#)

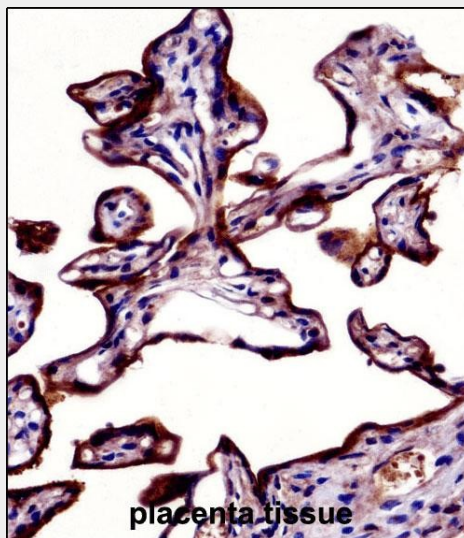
ALPP Antibody (N-term) - Images



ALPP Antibody (N-term) (Cat. #AP14937a) western blot analysis in HepG2 cell line lysates (35ug/lane). This demonstrates the ALPP antibody detected the ALPP protein (arrow).



Western blot analysis of ALPP (arrow) using rabbit polyclonal ALPP Antibody (N-term) (Cat. #AP14937a). 293 cell lysates (2 ug/lane) either nontransfected (Lane 1) or transiently transfected (Lane 2) with the ALPP gene.



ALPP Antibody (N-term) (AP14937a) immunohistochemistry analysis in formalin fixed and paraffin embedded human placenta tissue followed by peroxidase conjugation of the secondary antibody and DAB staining. This data demonstrates the use of ALPP Antibody (N-term) for immunohistochemistry. Clinical relevance has not been evaluated.

ALPP Antibody (N-term) - Background

There are at least four distinct but related alkaline phosphatases: intestinal, placental, placental-like, and liver/bone/kidney (tissue non-specific). The first three are located together on chromosome 2 while the tissue non-specific form is located on chromosome 1. The product of this gene is a membrane bound glycosylated enzyme, also referred to as the heat stable form, that is expressed primarily in the placenta although it is closely related to the intestinal form of the enzyme as well as to the placental-like form. The coding sequence for this form of alkaline phosphatase is unique in that the 3' untranslated region contains multiple copies of an Alu family repeat. In addition, this gene is polymorphic and three common alleles (type 1, type 2 and type 3) for this form of alkaline phosphatase have been well characterized.

ALPP Antibody (N-term) - References

Stec, B., et al. Acta Crystallogr. Sect. F Struct. Biol. Cryst. Commun. 66 (PT 8), 866-870 (2010) :
Wang, F., et al. Am. J. Surg. Pathol. 33(10):1529-1539(2009)
Estrada, K., et al. Hum. Mol. Genet. 18(18):3516-3524(2009)
Zhu, J.F., et al. Zhonghua Wai Ke Za Zhi 47(5):381-384(2009)
Roberson, J.R., et al. Pediatr Blood Cancer 51(6):840-842(2008)