

Mouse Clk3 Antibody (N-term)
Affinity Purified Rabbit Polyclonal Antibody (Pab)
Catalog # AP14953A**Specification**

Mouse Clk3 Antibody (N-term) - Product Information

Application	WB,E
Primary Accession	O35492
Other Accession	NP_031739.3
Reactivity	Mouse
Host	Rabbit
Clonality	Polyclonal
Isotype	Rabbit IgG
Calculated MW	58499
Antigen Region	20-48

Mouse Clk3 Antibody (N-term) - Additional Information**Gene ID** 102414**Other Names**

Dual specificity protein kinase CLK3, CDC-like kinase 3, Clk3

Target/Specificity

This Mouse Clk3 antibody is generated from rabbits immunized with a KLH conjugated synthetic peptide between 20-48 amino acids from the N-terminal region of mouse Clk3.

Dilution

WB~~1:1000

E~~Use at an assay dependent concentration.

Format

Purified polyclonal antibody supplied in PBS with 0.09% (W/V) sodium azide. This antibody is purified through a protein A column, followed by peptide affinity purification.

Storage

Maintain refrigerated at 2-8°C for up to 2 weeks. For long term storage store at -20°C in small aliquots to prevent freeze-thaw cycles.

Precautions

Mouse Clk3 Antibody (N-term) is for research use only and not for use in diagnostic or therapeutic procedures.

Mouse Clk3 Antibody (N-term) - Protein Information**Name** Clk3 {ECO:0000312|MGI:MGI:1098670}**Function** Dual specificity kinase acting on both serine/threonine and tyrosine-containing

substrates. Phosphorylates serine- and arginine- rich (SR) proteins of the spliceosomal complex. May be a constituent of a network of regulatory mechanisms that enable SR proteins to control RNA splicing and can cause redistribution of SR proteins from speckles to a diffuse nucleoplasmic distribution. Phosphorylates SRSF1 and SRSF3. Regulates the alternative splicing of tissue factor (F3) pre- mRNA in endothelial cells.

Cellular Location

Nucleus. Cytoplasm. Cytoplasmic vesicle, secretory vesicle, acrosome

Tissue Location

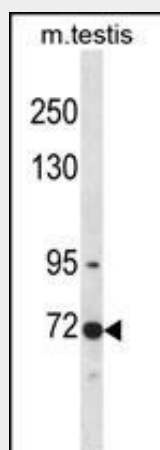
Present at high levels in testis and ovary. In testis, expression is restricted to elongated, maturing spermatozoa Also present in spleen, brain, lung and liver (at protein level)

Mouse Clk3 Antibody (N-term) - Protocols

Provided below are standard protocols that you may find useful for product applications.

- [Western Blot](#)
- [Blocking Peptides](#)
- [Dot Blot](#)
- [Immunohistochemistry](#)
- [Immunofluorescence](#)
- [Immunoprecipitation](#)
- [Flow Cytometry](#)
- [Cell Culture](#)

Mouse Clk3 Antibody (N-term) - Images



Mouse Clk3 Antibody (N-term) (Cat. #AP14953a) western blot analysis in mouse testis tissue lysates (35ug/lane). This demonstrates the Clk3 antibody detected the Clk3 protein (arrow).

Mouse Clk3 Antibody (N-term) - Background

Phosphorylates serine- and arginine-rich (SR) proteins of the spliceosomal complex. May be a constituent of a network of regulatory mechanisms that enable SR proteins to control RNA splicing. Phosphorylates serines, threonines and tyrosines.

Mouse Clk3 Antibody (N-term) - References

Sansom, S.N., et al. PLoS Genet. 5 (6), E1000511 (2009) :

Carrier, A., et al. Immunogenetics 50 (5-6), 255-270 (1999) :
Nayler, O., et al. Biochem. J. 326 (PT 3), 693-700 (1997) :