

BARX1 Antibody (C-term)
Affinity Purified Rabbit Polyclonal Antibody (Pab)
Catalog # AP14959b**Specification**

BARX1 Antibody (C-term) - Product Information

Application	WB,E
Primary Accession	O9HBU1
Other Accession	NP_067545.3
Reactivity	Human
Host	Rabbit
Clonality	Polyclonal
Isotype	Rabbit IgG
Calculated MW	27298
Antigen Region	211-240

BARX1 Antibody (C-term) - Additional Information**Gene ID** 56033**Other Names**

Homeobox protein BarH-like 1, BARX1

Target/Specificity

This BARX1 antibody is generated from rabbits immunized with a KLH conjugated synthetic peptide between 211-240 amino acids from the C-terminal region of human BARX1.

Dilution

WB~~1:1000

E~~Use at an assay dependent concentration.

Format

Purified polyclonal antibody supplied in PBS with 0.09% (W/V) sodium azide. This antibody is purified through a protein A column, followed by peptide affinity purification.

Storage

Maintain refrigerated at 2-8°C for up to 2 weeks. For long term storage store at -20°C in small aliquots to prevent freeze-thaw cycles.

Precautions

BARX1 Antibody (C-term) is for research use only and not for use in diagnostic or therapeutic procedures.

BARX1 Antibody (C-term) - Protein Information**Name** BARX1**Function** Transcription factor, which is involved in craniofacial development, in odontogenesis

and in stomach organogenesis. May have a role in the differentiation of molars from incisors. Plays a role in suppressing endodermal Wnt activity (By similarity). Binds to a regulatory module of the NCAM promoter.

Cellular Location

Nucleus.

Tissue Location

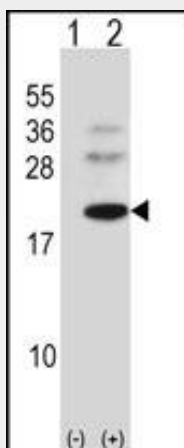
Widely expressed. Expressed at higher levels in testis and heart. Detected in craniofacial tissue and adult iris, but not in lymphocytes, fibroblasts, choroid retina, retinal pigment epithelium, kidney, or fetal liver

BARX1 Antibody (C-term) - Protocols

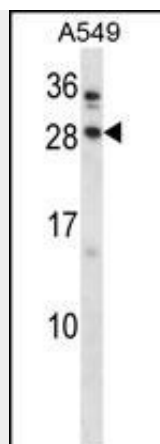
Provided below are standard protocols that you may find useful for product applications.

- [Western Blot](#)
- [Blocking Peptides](#)
- [Dot Blot](#)
- [Immunohistochemistry](#)
- [Immunofluorescence](#)
- [Immunoprecipitation](#)
- [Flow Cytometry](#)
- [Cell Culture](#)

BARX1 Antibody (C-term) - Images



Western blot analysis of BARX1 (arrow) using rabbit polyclonal BARX1 Antibody (C-term) (Cat. #AP14959b). 293 cell lysates (2 ug/lane) either nontransfected (Lane 1) or transiently transfected (Lane 2) with the BARX1 gene.



BARX1 Antibody (C-term) (Cat. #AP14959b) western blot analysis in A549 cell line lysates (35ug/lane). This demonstrates the BARX1 antibody detected the BARX1 protein (arrow).

BARX1 Antibody (C-term) - Background

This gene encodes a member of the Bar subclass of homeobox transcription factors. Studies of the mouse and chick homolog suggest the encoded protein may play a role in developing teeth and craniofacial mesenchyme of neural crest origin. The protein may also be associated with differentiation of stomach epithelia.

BARX1 Antibody (C-term) - References

Jugessur, A., et al. PLoS ONE 5 (7), E11493 (2010) :
Vieira, A.R., et al. Genet. Med. 10(9):668-674(2008)
Krivicka-Uzkurele, B., et al. Stomatologija 10(2):62-66(2008)
Lowry, R.B., et al. Am. J. Med. Genet. A 143A (11), 1227-1230 (2007) :
Gould, D.B., et al. Genomics 68(3):336-342(2000)