

LHX6 Antibody (C-term)
Affinity Purified Rabbit Polyclonal Antibody (Pab)
Catalog # AP14968b

Specification

LHX6 Antibody (C-term) - Product Information

Application	WB,E
Primary Accession	Q9UPM6
Other Accession	NP_954629.2 , NP_055183.2
Reactivity	Mouse
Host	Rabbit
Clonality	Polyclonal
Isotype	Rabbit IgG
Calculated MW	40045
Antigen Region	334-363

LHX6 Antibody (C-term) - Additional Information

Gene ID 26468

Other Names

LIM/homeobox protein Lhx6, LIM homeobox protein 6, LIM/homeobox protein Lhx61, LHX6, LHX61

Target/Specificity

This LHX6 antibody is generated from rabbits immunized with a KLH conjugated synthetic peptide between 334-363 amino acids from the C-terminal region of human LHX6.

Dilution

WB~~1:1000

E~~Use at an assay dependent concentration.

Format

Purified polyclonal antibody supplied in PBS with 0.09% (W/V) sodium azide. This antibody is purified through a protein A column, followed by peptide affinity purification.

Storage

Maintain refrigerated at 2-8°C for up to 2 weeks. For long term storage store at -20°C in small aliquots to prevent freeze-thaw cycles.

Precautions

LHX6 Antibody (C-term) is for research use only and not for use in diagnostic or therapeutic procedures.

LHX6 Antibody (C-term) - Protein Information

Name LHX6

Synonyms LHX6.1

Function Probable transcription factor required for the expression of a subset of genes involved in interneurons migration and development. Functions in the specification of cortical interneuron subtypes and in the migration of GABAergic interneuron precursors from the subpallium to the cerebral cortex (By similarity).

Cellular Location

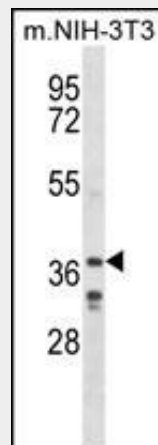
Nucleus.

LHX6 Antibody (C-term) - Protocols

Provided below are standard protocols that you may find useful for product applications.

- [Western Blot](#)
- [Blocking Peptides](#)
- [Dot Blot](#)
- [Immunohistochemistry](#)
- [Immunofluorescence](#)
- [Immunoprecipitation](#)
- [Flow Cytometry](#)
- [Cell Culture](#)

LHX6 Antibody (C-term) - Images



LHX6 Antibody (C-term) (Cat. #AP14968b) western blot analysis in mouse NIH-3T3 cell line lysates (35ug/lane). This demonstrates the LHX6 antibody detected the LHX6 protein (arrow).

LHX6 Antibody (C-term) - Background

This gene encodes a member of a large protein family that contains the LIM domain, a unique cysteine-rich zinc-binding domain. The encoded protein may function as a transcriptional regulator and may be involved in the control of differentiation and development of neural and lymphoid cells. Two alternatively spliced transcript variants encoding distinct isoforms have been described for this gene. Alternatively spliced transcript variants have been identified, but their biological validity has not been determined.

LHX6 Antibody (C-term) - References

Rose, J.E., et al. Mol. Med. 16 (7-8), 247-253 (2010) :

Jung, S., et al. Oncol. Rep. 23(6):1675-1682(2010)

Joslyn, G., et al. Alcohol. Clin. Exp. Res. 34(5):800-812(2010)

Estecio, M.R., et al. Oncogene 25(36):5018-5026(2006)

Humphray, S.J., et al. Nature 429(6990):369-374(2004)

LHX6 Antibody (C-term) - Citations

- [Effective differentiation of induced pluripotent stem cells into dental cells.](#)