

PMS1 Antibody (C-term)
Affinity Purified Rabbit Polyclonal Antibody (Pab)
Catalog # AP14975B

Specification

PMS1 Antibody (C-term) - Product Information

Application	WB,E
Primary Accession	P54277
Other Accession	NP_000525.1
Reactivity	Human
Host	Rabbit
Clonality	Polyclonal
Isotype	Rabbit IgG
Calculated MW	105830
Antigen Region	694-722

PMS1 Antibody (C-term) - Additional Information

Gene ID 5378

Other Names

PMS1 protein homolog 1, DNA mismatch repair protein PMS1, PMS1, PMSL1

Target/Specificity

This PMS1 antibody is generated from rabbits immunized with a KLH conjugated synthetic peptide between 694-722 amino acids from the C-terminal region of human PMS1.

Dilution

WB~~1:1000

Format

Purified polyclonal antibody supplied in PBS with 0.09% (W/V) sodium azide. This antibody is purified through a protein A column, followed by peptide affinity purification.

Storage

Maintain refrigerated at 2-8°C for up to 2 weeks. For long term storage store at -20°C in small aliquots to prevent freeze-thaw cycles.

Precautions

PMS1 Antibody (C-term) is for research use only and not for use in diagnostic or therapeutic procedures.

PMS1 Antibody (C-term) - Protein Information

Name PMS1

Synonyms PMSL1

Function Probably involved in the repair of mismatches in DNA.

Cellular Location

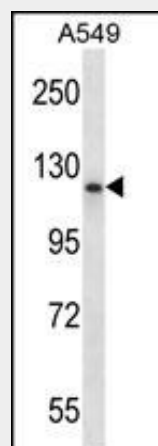
Nucleus {ECO:0000255|PROSITE-ProRule:PRU00267}.

PMS1 Antibody (C-term) - Protocols

Provided below are standard protocols that you may find useful for product applications.

- [Western Blot](#)
- [Blocking Peptides](#)
- [Dot Blot](#)
- [Immunohistochemistry](#)
- [Immunofluorescence](#)
- [Immunoprecipitation](#)
- [Flow Cytometry](#)
- [Cell Culture](#)

PMS1 Antibody (C-term) - Images



PMS1 Antibody (C-term) (Cat. #AP14975b) western blot analysis in A549 cell line lysates (35ug/lane). This demonstrates the PMS1 antibody detected the PMS1 protein (arrow).

PMS1 Antibody (C-term) - Background

This gene encodes a protein belonging to the DNA mismatch repair mutL/hexB family. This protein is thought to be involved in the repair of DNA mismatches, and it can form heterodimers with MLH1, a known DNA mismatch repair protein. Mutations in this gene cause hereditary nonpolyposis colorectal cancer type 3 (HNPCC3) either alone or in combination with mutations in other genes involved in the HNPCC phenotype, which is also known as Lynch syndrome.

PMS1 Antibody (C-term) - References

Hong, K.W., et al. J. Hum. Genet. 55(6):336-341(2010)
Monsees, G.M., et al. Breast Cancer Res. Treat. (2010) In press :
Guey, L.T., et al. Eur. Urol. 57(2):283-292(2010)
Hosgood, H.D. III, et al. Respir Med 103(12):1866-1870(2009)

Adeyemo, A., et al. PLoS Genet. 5 (7), E1000564 (2009) :