

LASP1 Antibody (Center)
Affinity Purified Rabbit Polyclonal Antibody (Pab)
Catalog # AP14992c**Specification**

LASP1 Antibody (Center) - Product Information

Application	WB,E
Primary Accession	Q14847
Other Accession	NP_006139.1
Reactivity	Human
Host	Rabbit
Clonality	Polyclonal
Isotype	Rabbit IgG
Calculated MW	29717
Antigen Region	120-148

LASP1 Antibody (Center) - Additional Information**Gene ID** 3927**Other Names**

LIM and SH3 domain protein 1, LASP-1, Metastatic lymph node gene 50 protein, MLN 50, LASP1, MLN50

Target/Specificity

This LASP1 antibody is generated from rabbits immunized with a KLH conjugated synthetic peptide between 120-148 amino acids from the Central region of human LASP1.

Dilution

WB~~1:1000

E~~Use at an assay dependent concentration.

Format

Purified polyclonal antibody supplied in PBS with 0.09% (W/V) sodium azide. This antibody is purified through a protein A column, followed by peptide affinity purification.

Storage

Maintain refrigerated at 2-8°C for up to 2 weeks. For long term storage store at -20°C in small aliquots to prevent freeze-thaw cycles.

Precautions

LASP1 Antibody (Center) is for research use only and not for use in diagnostic or therapeutic procedures.

LASP1 Antibody (Center) - Protein Information**Name** LASP1

Synonyms MLN50

Function Plays an important role in the regulation of dynamic actin- based, cytoskeletal activities. Agonist-dependent changes in LASP1 phosphorylation may also serve to regulate actin-associated ion transport activities, not only in the parietal cell but also in certain other F-actin-rich secretory epithelial cell types (By similarity).

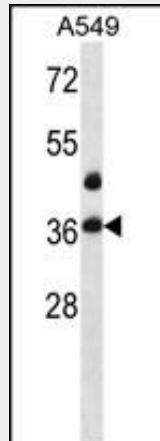
Cellular Location

Cytoplasm, cell cortex. Cytoplasm, cytoskeleton. Note=Associated with the F-actin rich cortical cytoskeleton.

LASP1 Antibody (Center) - Protocols

Provided below are standard protocols that you may find useful for product applications.

- [Western Blot](#)
- [Blocking Peptides](#)
- [Dot Blot](#)
- [Immunohistochemistry](#)
- [Immunofluorescence](#)
- [Immunoprecipitation](#)
- [Flow Cytometry](#)
- [Cell Culture](#)

LASP1 Antibody (Center) - Images

LASP1 Antibody (Center) (Cat. #AP14992c) western blot analysis in A549 cell line lysates (35ug/lane). This demonstrates the LASP1 antibody detected the LASP1 protein (arrow).

LASP1 Antibody (Center) - Background

This gene encodes a member of a LIM protein subfamily characterized by a LIM motif and a domain of Src homology region 3. The encoded protein functions as an actin-binding protein and possibly in cytoskeletal organization.

LASP1 Antibody (Center) - References

Traenka, C., et al. Cancer Res. 70(20):8003-8014(2010)
Zhao, L., et al. FEBS J. 277(20):4195-4204(2010)

Zhao, L., et al. Gut 59(9):1226-1235(2010)
Rose, J.E., et al. Mol. Med. 16 (7-8), 247-253 (2010) :
Frietsch, J.J., et al. Br. J. Cancer 102(11):1645-1653(2010)