

CDH3 Antibody (C-term)
Affinity Purified Rabbit Polyclonal Antibody (Pab)
Catalog # AP1499B

Specification

CDH3 Antibody (C-term) - Product Information

Application	IHC-P, WB,E
Primary Accession	P22223
Reactivity	Human
Host	Rabbit
Clonality	Polyclonal
Isotype	Rabbit IgG
Antigen Region	660-688

CDH3 Antibody (C-term) - Additional Information

Gene ID 1001

Other Names

Cadherin-3, Placental cadherin, P-cadherin, CDH3, CDHP

Target/Specificity

This CDH3 antibody is generated from rabbits immunized with a KLH conjugated synthetic peptide between 660-688 amino acids from the C-terminal region of human CDH3.

Dilution

IHC-P~~1:10~50

WB~~1:1000

E~~Use at an assay dependent concentration.

Format

Purified polyclonal antibody supplied in PBS with 0.09% (W/V) sodium azide. This antibody is purified through a protein A column, followed by peptide affinity purification.

Storage

Maintain refrigerated at 2-8°C for up to 2 weeks. For long term storage store at -20°C in small aliquots to prevent freeze-thaw cycles.

Precautions

CDH3 Antibody (C-term) is for research use only and not for use in diagnostic or therapeutic procedures.

CDH3 Antibody (C-term) - Protein Information

Name CDH3

Synonyms CDHP

Function Cadherins are calcium-dependent cell adhesion proteins. They preferentially interact with themselves in a homophilic manner in connecting cells; cadherins may thus contribute to the sorting of heterogeneous cell types.

Cellular Location

Cell membrane; Single-pass type I membrane protein

Tissue Location

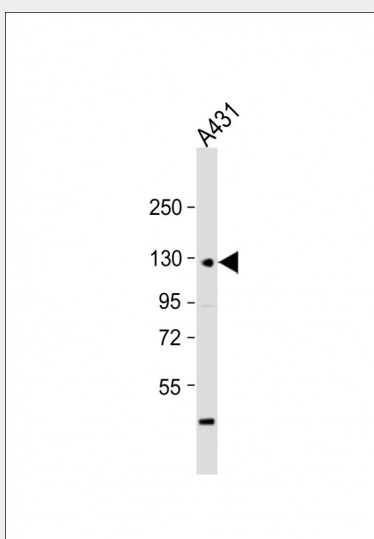
Expressed in some normal epithelial tissues and in some carcinoma cell lines.

CDH3 Antibody (C-term) - Protocols

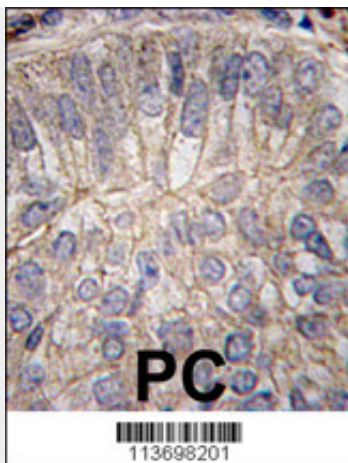
Provided below are standard protocols that you may find useful for product applications.

- [Western Blot](#)
- [Blocking Peptides](#)
- [Dot Blot](#)
- [Immunohistochemistry](#)
- [Immunofluorescence](#)
- [Immunoprecipitation](#)
- [Flow Cytometry](#)
- [Cell Culture](#)

CDH3 Antibody (C-term) - Images



Anti-CDH3 Antibody (C-term) at 1:1000 dilution + A431 whole cell lysate Lysates/proteins at 20 µg per lane. Secondary Goat Anti-Rabbit IgG, (H+L), Peroxidase conjugated at 1/10000 dilution. Predicted band size : 91 kDa Blocking/Dilution buffer: 5% NFDm/TBST.



Formalin-fixed and paraffin-embedded human prostate carcinoma tissue reacted with CDH3 antibody (C-term) (Cat.#AP1499b), which was peroxidase-conjugated to the secondary antibody, followed by DAB staining. This data demonstrates the use of this antibody for immunohistochemistry; clinical relevance has not been evaluated.

CDH3 Antibody (C-term) - Background

CDH3 is a classical cadherin from the cadherin superfamily. It is a calcium-dependent cell-cell adhesion glycoprotein comprised of five extracellular cadherin repeats, a transmembrane region and a highly conserved cytoplasmic tail. Aberrant expression of this protein is observed in cervical adenocarcinomas. Mutations in the gene encoding CDH3 have been associated with congenital hypotrichosis with juvenile macular dystrophy.

CDH3 Antibody (C-term) - References

Indelman,M., Clin. Exp. Dermatol. 32 (2), 191-196 (2007)

Paredes,J., Clin. Cancer Res. 11 (16), 5869-5877 (2005)

CDH3 Antibody (C-term) - Citations

- [Progression Risk Score Estimation Based on Immunostaining Data in Oral Cancer Using Unsupervised Hierarchical Clustering Analysis: A Retrospective Study in Taiwan](#)