

Phospho-ATRIP(S239) Antibody
Affinity Purified Rabbit Polyclonal Antibody (Pab)
Catalog # AP15000a**Specification**

Phospho-ATRIP(S239) Antibody - Product Information

Application	DB,E
Primary Accession	O8WXE1
Other Accession	O9N077 , NP_115542.2
Reactivity	Human
Predicted	Monkey
Host	Rabbit
Clonality	Polyclonal
Isotype	Rabbit IgG
Calculated MW	85838

Phospho-ATRIP(S239) Antibody - Additional Information**Gene ID** 84126**Other Names**

ATR-interacting protein, ATM and Rad3-related-interacting protein, ATRIP, AGS1

Target/Specificity

This ATRIP Antibody is generated from rabbits immunized with a KLH conjugated synthetic phosphopeptide corresponding to amino acid residues surrounding S239 of human ATRIP.

Dilution

DB~~1:500

E~~Use at an assay dependent concentration.

Format

Purified polyclonal antibody supplied in PBS with 0.09% (W/V) sodium azide. This antibody is purified through a protein A column, followed by peptide affinity purification.

Storage

Maintain refrigerated at 2-8°C for up to 2 weeks. For long term storage store at -20°C in small aliquots to prevent freeze-thaw cycles.

Precautions

Phospho-ATRIP(S239) Antibody is for research use only and not for use in diagnostic or therapeutic procedures.

Phospho-ATRIP(S239) Antibody - Protein Information**Name** ATRIP**Synonyms** AGS1

Function Required for checkpoint signaling after DNA damage. Required for ATR expression, possibly by stabilizing the protein.

Cellular Location

Nucleus. Note=Redistributes to discrete nuclear foci upon DNA damage

Tissue Location

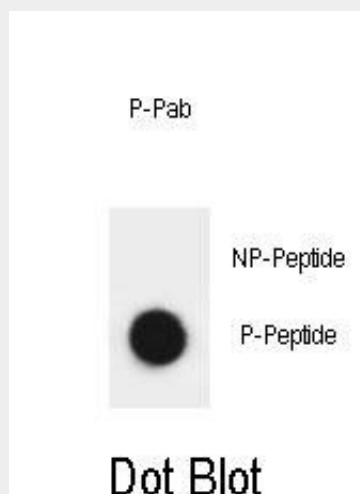
Ubiquitous..

Phospho-ATRIP(S239) Antibody - Protocols

Provided below are standard protocols that you may find useful for product applications.

- [Western Blot](#)
- [Blocking Peptides](#)
- [Dot Blot](#)
- [Immunohistochemistry](#)
- [Immunofluorescence](#)
- [Immunoprecipitation](#)
- [Flow Cytometry](#)
- [Cell Culture](#)

Phospho-ATRIP(S239) Antibody - Images



Dot blot analysis of Phospho-ATRIP-S239 Antibody Phospho-specific Pab (Cat. #AP15000a) on nitrocellulose membrane. 50ng of Phospho-peptide or Non Phospho-peptide per dot were adsorbed. Antibody working concentrations are 0.6ug per ml.

Phospho-ATRIP(S239) Antibody - Background

The product of this gene is an essential component of the DNA damage checkpoint, and binds to single-stranded DNA coated with replication protein A that accumulates at sites of DNA damage. The encoded protein interacts with the ataxia telangiectasia and Rad3 related protein, a checkpoint kinase, resulting in accumulation of the kinase at intranuclear foci induced by DNA damage. Multiple transcript variants encoding different isoforms have been found for this gene.

Phospho-ATRIP(S239) Antibody - References

Bailey, S.D., et al. Diabetes Care (2010) In press :
Talmud, P.J., et al. Am. J. Hum. Genet. 85(5):628-642(2009)
Vega, A., et al. Gynecol. Oncol. 112(1):210-214(2009)
Myers, J.S., et al. Cancer Res. 67(14):6685-6690(2007)
Venere, M., et al. Cancer Res. 67(13):6100-6105(2007)