

DKKL1 Antibody (C-term)
Purified Rabbit Polyclonal Antibody (Pab)
Catalog # AP1525b**Specification**

DKKL1 Antibody (C-term) - Product Information

Application	IHC-P, WB,E
Primary Accession	O9UK85
Other Accession	NP_055234
Reactivity	Human, Mouse
Host	Rabbit
Clonality	Polyclonal
Isotype	Rabbit IgG
Calculated MW	27007
Antigen Region	213-242

DKKL1 Antibody (C-term) - Additional Information**Gene ID** 27120**Other Names**

Dickkopf-like protein 1, Cancer/testis antigen 34, CT34, Protein soggy-1, SGY-1, DKKL1, SGY1

Target/Specificity

This DKKL1 antibody is generated from rabbits immunized with a KLH conjugated synthetic peptide between 213-242 amino acids from the C-terminal region of human DKKL1.

Dilution

IHC-P~~1:50~100

WB~~1:1000

E~~Use at an assay dependent concentration.

Format

Purified polyclonal antibody supplied in PBS with 0.09% (W/V) sodium azide. This antibody is prepared by Saturated Ammonium Sulfate (SAS) precipitation followed by dialysis against PBS.

Storage

Maintain refrigerated at 2-8°C for up to 2 weeks. For long term storage store at -20°C in small aliquots to prevent freeze-thaw cycles.

Precautions

DKKL1 Antibody (C-term) is for research use only and not for use in diagnostic or therapeutic procedures.

DKKL1 Antibody (C-term) - Protein Information**Name** DKKL1 ([HGNC:16528](#))

Function Involved in fertilization by facilitating sperm penetration of the zona pellucida. May promote spermatocyte apoptosis, thereby limiting sperm production. In adults, may reduce testosterone synthesis in Leydig cells. Is not essential either for development or fertility.

Cellular Location

Secreted {ECO:0000250|UniProtKB:Q9QZL9}. Cytoplasmic vesicle, secretory vesicle, acrosome {ECO:0000250|UniProtKB:Q9QZL9}. Note=Localized specifically to the crescent shaped acrosome at the apex of the sperm head {ECO:0000250|UniProtKB:Q9QZL9}

Tissue Location

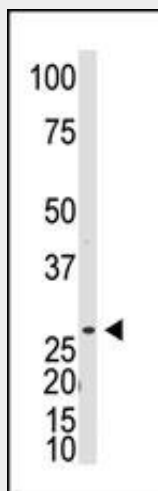
More highly expressed in adult testis than in fetal testis. Exclusively expressed in the testis (at protein level). Intense expression in stages II, III and IV of spermatogenesis, whereas expression is lower in stage I.

DKKL1 Antibody (C-term) - Protocols

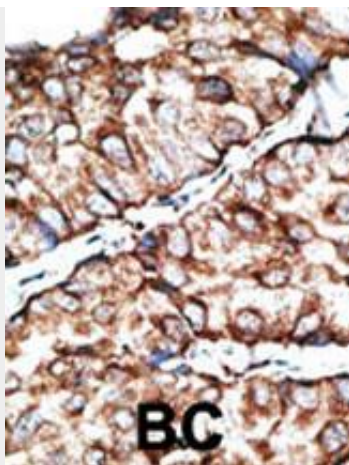
Provided below are standard protocols that you may find useful for product applications.

- [Western Blot](#)
- [Blocking Peptides](#)
- [Dot Blot](#)
- [Immunohistochemistry](#)
- [Immunofluorescence](#)
- [Immunoprecipitation](#)
- [Flow Cytometry](#)
- [Cell Culture](#)

DKKL1 Antibody (C-term) - Images



The anti-DKKL1 C-term Pab (Cat. #AP1525b) is used in Western blot to detect DKKL1 in mouse testis tissue lysate.



Formalin-fixed and paraffin-embedded human cancer tissue reacted with the primary antibody, which was peroxidase-conjugated to the secondary antibody, followed by DAB staining. This data demonstrates the use of this antibody for immunohistochemistry; clinical relevance has not been evaluated. BC = breast carcinoma; HC = hepatocarcinoma.

DKKL1 Antibody (C-term) - Background

The dickkopf protein family interacts with the Wnt signaling pathway and its members are characterized by two conserved cysteine-rich domains. This gene encodes a secreted protein that has high similarity to the N-terminus of the dickkopf-3 protein and moderate similarity to that protein's C-terminus though the C-terminal cysteine residues are not conserved.

DKKL1 Antibody (C-term) - References

Clark, H.F., et al., Genome Res. 13(10):2265-2270 (2003). Krupnik, V.E., et al., Gene 238(2):301-313 (1999).