

GJA3 Antibody (N-term)
Purified Rabbit Polyclonal Antibody (Pab)
Catalog # AP1543a

Specification

GJA3 Antibody (N-term) - Product Information

Application	WB, IHC-P,E
Primary Accession	Q9Y6H8
Reactivity	Human
Host	Rabbit
Clonality	Polyclonal
Isotype	Rabbit IgG
Antigen Region	108-139

GJA3 Antibody (N-term) - Additional Information

Gene ID 2700

Other Names

Gap junction alpha-3 protein, Connexin-46, Cx46, GJA3

Target/Specificity

This GJA3 antibody is generated from rabbits immunized with a KLH conjugated synthetic peptide between 108-139 amino acids from the N-terminal region of human GJA3.

Dilution

WB~~1:1000

IHC-P~~1:50~100

E~~Use at an assay dependent concentration.

Format

Purified polyclonal antibody supplied in PBS with 0.09% (W/V) sodium azide. This antibody is prepared by Saturated Ammonium Sulfate (SAS) precipitation followed by dialysis against PBS.

Storage

Maintain refrigerated at 2-8°C for up to 2 weeks. For long term storage store at -20°C in small aliquots to prevent freeze-thaw cycles.

Precautions

GJA3 Antibody (N-term) is for research use only and not for use in diagnostic or therapeutic procedures.

GJA3 Antibody (N-term) - Protein Information

Name GJA3

Function Structural component of lens fiber gap junctions (PubMed:[30044662](#)). Gap junctions are dodecameric channels that connect the cytoplasm of adjoining cells (By similarity). They are

formed by the docking of two hexameric hemichannels, one from each cell membrane. Small molecules and ions diffuse from one cell to a neighboring cell via the central pore (PubMed:[30044662](#)).

Cellular Location

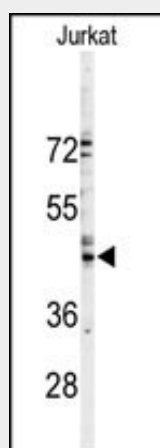
Cell membrane; Multi-pass membrane protein {ECO:0000250|UniProtKB:Q9TU17}. Cell junction, gap junction

GJA3 Antibody (N-term) - Protocols

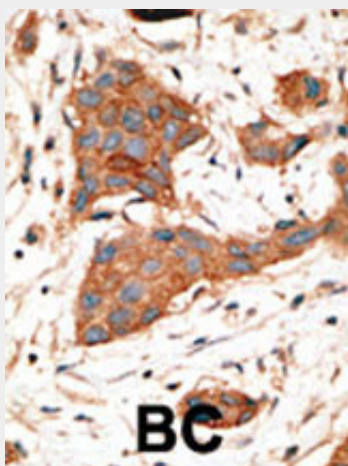
Provided below are standard protocols that you may find useful for product applications.

- [Western Blot](#)
- [Blocking Peptides](#)
- [Dot Blot](#)
- [Immunohistochemistry](#)
- [Immunofluorescence](#)
- [Immunoprecipitation](#)
- [Flow Cytometry](#)
- [Cell Culture](#)

GJA3 Antibody (N-term) - Images



Western blot analysis of GJA3 Antibody (N-term) (Cat.#AP1543a) in Jurkat cell line lysates (35ug/lane). GJA3 (arrow) was detected using the purified Pab.



Formalin-fixed and paraffin-embedded human cancer tissue reacted with the primary antibody, which was peroxidase-conjugated to the secondary antibody, followed by DAB staining. This data demonstrates the use of this antibody for immunohistochemistry; clinical relevance has not been evaluated. BC = breast carcinoma;

GJA3 Antibody (N-term) - Background

GJA3, an integral membrane protein, belong to the connexin family, alpha-type (group II) subfamily. One gap junction consists of a cluster of closely packed pairs of transmembrane channels, the connexons, through which materials of low MW diffuse from one cell to a neighboring cell. A connexon is composed of a hexamer of connexins. This particular connexin is a component of lens fiber gap junctions, can form both junctional and nonjunctional ('hemi-') channels. Defects in GJA3 are the cause of zonular pulverulent cataract type 3 (CZP3), a form of autosomal dominant congenital cataract.

GJA3 Antibody (N-term) - References

Mackay, D., et al., Am. J. Hum. Genet. 64(5):1357-1364 (1999).