

Connexin 31 Antibody (C-term)
Purified Rabbit Polyclonal Antibody (Pab)
Catalog # AP1543b**Specification**

Connexin 31 Antibody (C-term) - Product Information

Application	IHC-P, WB,E
Primary Accession	O75712
Reactivity	Human
Host	Rabbit
Clonality	Polyclonal
Isotype	Rabbit IgG
Antigen Region	227-257

Connexin 31 Antibody (C-term) - Additional Information**Gene ID** 2707**Other Names**

Gap junction beta-3 protein, Connexin-31, Cx31, GJB3, CX31

Target/Specificity

This Connexin 31 antibody is generated from rabbits immunized with a KLH conjugated synthetic peptide between 227-257 amino acids from the C-terminal region of human Connexin 31.

Dilution

IHC-P~~1:50~100

WB~~1:1000

E~~Use at an assay dependent concentration.

Format

Purified polyclonal antibody supplied in PBS with 0.09% (W/V) sodium azide. This antibody is prepared by Saturated Ammonium Sulfate (SAS) precipitation followed by dialysis against PBS.

Storage

Maintain refrigerated at 2-8°C for up to 2 weeks. For long term storage store at -20°C in small aliquots to prevent freeze-thaw cycles.

Precautions

Connexin 31 Antibody (C-term) is for research use only and not for use in diagnostic or therapeutic procedures.

Connexin 31 Antibody (C-term) - Protein Information**Name** GJB3**Synonyms** CX31

Function One gap junction consists of a cluster of closely packed pairs of transmembrane channels, the connexons, through which materials of low MW diffuse from one cell to a neighboring cell.

Cellular Location

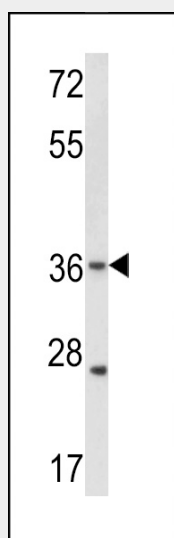
Cell membrane; Multi-pass membrane protein. Cell junction, gap junction

Connexin 31 Antibody (C-term) - Protocols

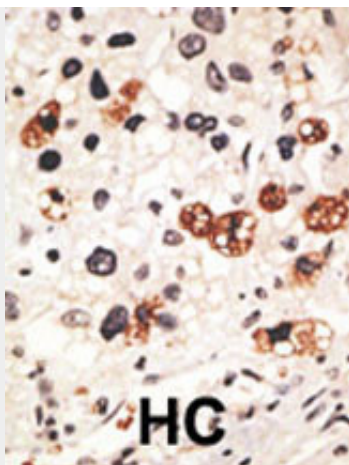
Provided below are standard protocols that you may find useful for product applications.

- [Western Blot](#)
- [Blocking Peptides](#)
- [Dot Blot](#)
- [Immunohistochemistry](#)
- [Immunofluorescence](#)
- [Immunoprecipitation](#)
- [Flow Cytometry](#)
- [Cell Culture](#)

Connexin 31 Antibody (C-term) - Images



Western blot analysis of hGJB3-C241 (Cat. #AP1543b) in WiDr cell line lysates (35ug/lane). GJB3 (arrow) was detected using the purified Pab.(2ug/ml)



Formalin-fixed and paraffin-embedded human cancer tissue reacted with the primary antibody, which was peroxidase-conjugated to the secondary antibody, followed by DAB staining. This data demonstrates the use of this antibody for immunohistochemistry; clinical relevance has not been evaluated. BC = breast carcinoma; HC = hepatocarcinoma.

Connexin 31 Antibody (C-term) - Background

Gap junctions are conduits that allow the direct cell-to-cell passage of small cytoplasmic molecules, including ions, metabolic intermediates, and second messengers, and thereby mediate intercellular metabolic and electrical communication. Gap junction channels consist of connexin protein subunits, which are encoded by a multigene family. GJBs (gap-junction proteins or connexins) play crucial functional roles associated with these channels. Defects in GJB3 have been linked to erythrokeratoderma variabilis (EKV) is an autosomal dominant genodermatosis characterized by transient figurate red patches or hyperkeratosis. Mutations in GJB2 have also been associated with genetically derived hearing impairments, including autosomal recessive nonsyndromic deafness.

Connexin 31 Antibody (C-term) - References

- Mhatre, A.N., et al., Clin. Genet. 63(2):154-159 (2003).
- Diestel, S., et al., Biochem. Biophys. Res. Commun. 296(3):721-728 (2002).
- Di, W.L., et al., Hum. Mol. Genet. 11(17):2005-2014 (2002).
- Gottfried, I., et al., Hum. Mol. Genet. 11(11):1311-1316 (2002).
- Wenzel, K., et al., Biochem. Biophys. Res. Commun. 248(3):910-915 (1998).