

GJB5 Antibody (Center)
Purified Rabbit Polyclonal Antibody (Pab)
Catalog # AP1545b

Specification

GJB5 Antibody (Center) - Product Information

Application	WB, IHC-P,E
Primary Accession	O95377
Reactivity	Human
Host	Rabbit
Clonality	Polyclonal
Isotype	Rabbit IgG
Antigen Region	89-119

GJB5 Antibody (Center) - Additional Information

Gene ID 2709

Other Names

Gap junction beta-5 protein, Connexin-311, Cx311, GJB5

Target/Specificity

This GJB5 antibody is generated from rabbits immunized with a KLH conjugated synthetic peptide between 89-119 amino acids from the Central region of human GJB5.

Dilution

WB~~1:1000

IHC-P~~1:50~100

Format

Purified polyclonal antibody supplied in PBS with 0.09% (W/V) sodium azide. This antibody is prepared by Saturated Ammonium Sulfate (SAS) precipitation followed by dialysis against PBS.

Storage

Maintain refrigerated at 2-8°C for up to 2 weeks. For long term storage store at -20°C in small aliquots to prevent freeze-thaw cycles.

Precautions

GJB5 Antibody (Center) is for research use only and not for use in diagnostic or therapeutic procedures.

GJB5 Antibody (Center) - Protein Information

Name GJB5

Function One gap junction consists of a cluster of closely packed pairs of transmembrane channels, the connexons, through which materials of low MW diffuse from one cell to a neighboring cell.

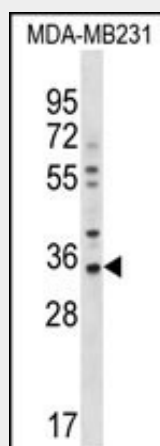
Cellular Location

Cell membrane; Multi-pass membrane protein. Cell junction, gap junction

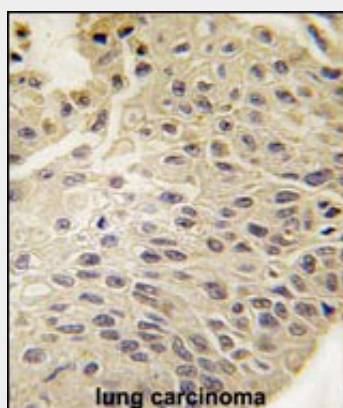
GJB5 Antibody (Center) - Protocols

Provided below are standard protocols that you may find useful for product applications.

- [Western Blot](#)
- [Blocking Peptides](#)
- [Dot Blot](#)
- [Immunohistochemistry](#)
- [Immunofluorescence](#)
- [Immunoprecipitation](#)
- [Flow Cytometry](#)
- [Cell Culture](#)

GJB5 Antibody (Center) - Images

GJB5 Antibody (R104.Connexin) (Cat.#AP1545b) western blot analysis in MDA-MB231 cell line lysates (35ug/lane). This demonstrates the GJB5 antibody detected the GJB5 protein (arrow).



Formalin-fixed and paraffin-embedded human lung carcinoma tissue reacted with GJB5 Antibody (Center) (Cat.#AP1545b), which was peroxidase-conjugated to the secondary antibody, followed by DAB staining. This data demonstrates the use of this antibody for immunohistochemistry; clinical relevance has not been evaluated.

GJB5 Antibody (Center) - Background

Gap junctions are conduits that allow the direct cell-to-cell passage of small cytoplasmic molecules, including ions, metabolic intermediates, and second messengers, and thereby mediate intercellular metabolic and electrical communication. Gap junction channels consist of connexin protein subunits, which are encoded by a multigene family. GJBs (gap-junction proteins or connexins) such as GJB5 are thought to play crucial functional roles associated with these channels.

GJB5 Antibody (Center) - References

Richard, G., et al., Nat. Genet. 20(4):366-369 (1998).

GJB5 Antibody (Center) - Citations

- [Expression pattern of connexins in the corneal and limbal epithelium of a primate.](#)