

**Connexin 50 Antibody (C-term)**  
**Purified Rabbit Polyclonal Antibody (Pab)**  
**Catalog # AP1548b****Specification**

---

**Connexin 50 Antibody (C-term) - Product Information**

Application	IHC-P, WB,E
Primary Accession	<a href="#">P48165</a>
Other Accession	<a href="#">P36381</a> , <a href="#">P55917</a>
Reactivity	Human, Mouse
Predicted	Chicken, Sheep
Host	Rabbit
Clonality	Polyclonal
Isotype	Rabbit IgG
Calculated MW	48229
Antigen Region	402-433

**Connexin 50 Antibody (C-term) - Additional Information****Gene ID** 2703**Other Names**

Gap junction alpha-8 protein, Connexin-50, Cx50, Lens fiber protein MP70, GJA8

**Target/Specificity**

This Connexin 50 antibody is generated from rabbits immunized with a KLH conjugated synthetic peptide between 402-433 amino acids from the C-terminal region of human Connexin 50.

**Dilution**

IHC-P~~1:50~100

WB~~1:1000

E~~Use at an assay dependent concentration.

**Format**

Purified polyclonal antibody supplied in PBS with 0.09% (W/V) sodium azide. This antibody is prepared by Saturated Ammonium Sulfate (SAS) precipitation followed by dialysis against PBS.

**Storage**

Maintain refrigerated at 2-8°C for up to 2 weeks. For long term storage store at -20°C in small aliquots to prevent freeze-thaw cycles.

**Precautions**

Connexin 50 Antibody (C-term) is for research use only and not for use in diagnostic or therapeutic procedures.

**Connexin 50 Antibody (C-term) - Protein Information****Name** GJA8

**Function** Structural component of eye lens gap junctions (PubMed:[18006672](#), PubMed:[19756179](#)). Gap junctions are dodecameric channels that connect the cytoplasm of adjoining cells. They are formed by the docking of two hexameric hemichannels, one from each cell membrane (By similarity). Small molecules and ions diffuse from one cell to a neighboring cell via the central pore (PubMed:[18006672](#), PubMed:[19756179](#)).

**Cellular Location**

Cell membrane; Multi-pass membrane protein {ECO:0000250|UniProtKB:P55917}. Cell junction, gap junction

**Tissue Location**

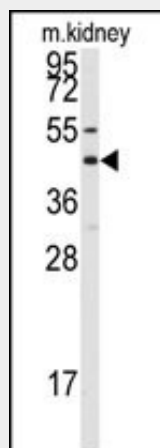
Eye lens..

**Connexin 50 Antibody (C-term) - Protocols**

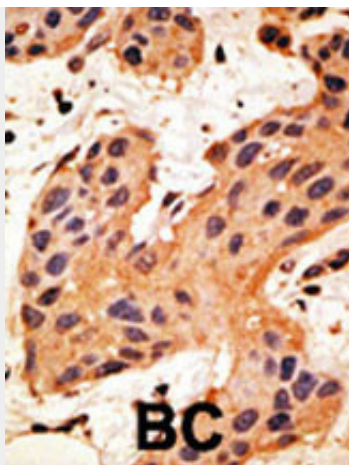
Provided below are standard protocols that you may find useful for product applications.

- [Western Blot](#)
- [Blocking Peptides](#)
- [Dot Blot](#)
- [Immunohistochemistry](#)
- [Immunofluorescence](#)
- [Immunoprecipitation](#)
- [Flow Cytometry](#)
- [Cell Culture](#)

**Connexin 50 Antibody (C-term) - Images**



Western blot analysis of anti-GJA8 Antibody (C-term) (Cat.#AP1548b) in mouse kidney tissue lysates (35ug/lane). GJA8 (arrow) was detected using the purified Pab.



Formalin-fixed and paraffin-embedded human cancer tissue reacted with the primary antibody, which was peroxidase-conjugated to the secondary antibody, followed by DAB staining. This data demonstrates the use of this antibody for immunohistochemistry; clinical relevance has not been evaluated. BC = breast carcinoma; HC = hepatocarcinoma.

#### **Connexin 50 Antibody (C-term) - Background**

GJA8 is a an integral membrane protein that belongs to the connexin family, alpha-type (group II) subfamily. One gap junction consists of a cluster of closely packed pairs of transmembrane channels, the connexons, through which materials of low MW diffuse from one cell to a neighboring cell. A connexon is composed of a hexamer of connexins. This particular connexin only forms junctional channels. GJA8 is expressed in the eye lens, and defects in GJA8 are the cause of zonular pulverulent cataract type 1 (CZP1), a form of autosomal dominant congenital cataract.

#### **Connexin 50 Antibody (C-term) - References**

Shiels, A., et al., Am. J. Hum. Genet. 62(3):526-532 (1998). Church, R.L., et al., Curr. Eye Res. 14(10):979-981 (1995). Church, R.L., et al., Curr. Eye Res. 14(3):215-221 (1995).