

**Connexin 36 Antibody (C-term)**  
**Purified Rabbit Polyclonal Antibody (Pab)**  
**Catalog # AP1549b****Specification**

---

**Connexin 36 Antibody (C-term) - Product Information**

Application	WB, IHC-P,E
Primary Accession	<a href="#">Q9UKL4</a>
Other Accession	<a href="#">O70610</a> , <a href="#">O54851</a> , <a href="#">Q866T7</a>
Reactivity	Human, Mouse, Rat
Predicted	Bovine
Host	Rabbit
Clonality	Polyclonal
Isotype	Rabbit IgG
Antigen Region	291-321

**Connexin 36 Antibody (C-term) - Additional Information****Gene ID** 57369**Other Names**

Gap junction delta-2 protein, Connexin-36, Cx36, Gap junction alpha-9 protein, GJD2, GJA9

**Target/Specificity**

This Connexin 36 antibody is generated from rabbits immunized with a KLH conjugated synthetic peptide between 291-321 amino acids from the C-terminal region of human Connexin 36.

**Dilution**

WB~~1:2000

IHC-P~~1:50~100

**Format**

Purified polyclonal antibody supplied in PBS with 0.09% (W/V) sodium azide. This antibody is prepared by Saturated Ammonium Sulfate (SAS) precipitation followed by dialysis against PBS.

**Storage**

Maintain refrigerated at 2-8°C for up to 2 weeks. For long term storage store at -20°C in small aliquots to prevent freeze-thaw cycles.

**Precautions**

Connexin 36 Antibody (C-term) is for research use only and not for use in diagnostic or therapeutic procedures.

**Connexin 36 Antibody (C-term) - Protein Information****Name** GJD2**Synonyms** GJA9

**Function** One gap junction consists of a cluster of closely packed pairs of transmembrane channels, the connexons, through which materials of low MW diffuse from one cell to a neighboring cell.

**Cellular Location**

Cell membrane; Multi-pass membrane protein. Cell junction, gap junction

**Tissue Location**

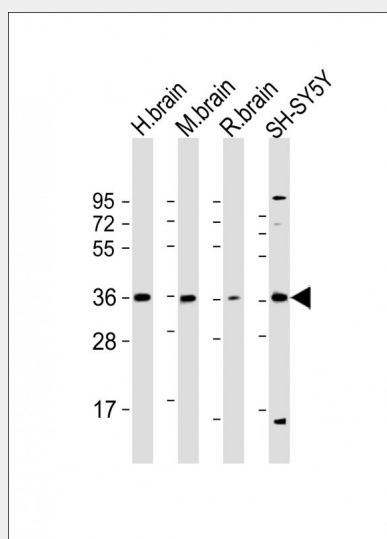
Highly expressed in neurons.

**Connexin 36 Antibody (C-term) - Protocols**

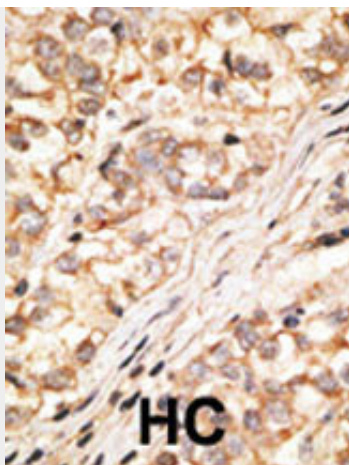
Provided below are standard protocols that you may find useful for product applications.

- [Western Blot](#)
- [Blocking Peptides](#)
- [Dot Blot](#)
- [Immunohistochemistry](#)
- [Immunofluorescence](#)
- [Immunoprecipitation](#)
- [Flow Cytometry](#)
- [Cell Culture](#)

**Connexin 36 Antibody (C-term) - Images**



All lanes : Anti-Connexin 36 Antibody (C-term) at 1:2000 dilution Lane 1: human brain lysate Lane 2: mouse brain lysate Lane 3: rat brain lysate Lane 4: SH-SY5Y whole cell lysate Lysates/proteins at 20 µg per lane. Secondary Goat Anti-Rabbit IgG, (H+L), Peroxidase conjugated at 1/10000 dilution. Predicted band size : 36kDa Blocking/Dilution buffer: 5% NFDM/TBST.



Formalin-fixed and paraffin-embedded human cancer tissue reacted with the primary antibody, which was peroxidase-conjugated to the secondary antibody, followed by DAB staining. This data demonstrates the use of this antibody for immunohistochemistry; clinical relevance has not been evaluated. BC = breast carcinoma; HC = hepatocarcinoma.

#### **Connexin 36 Antibody (C-term) - Background**

GJA9, also called connexin-36 (CX36), is a member of the connexin gene family that is expressed predominantly in mammalian neurons. Connexins associate in groups of 6 and are organized radially around a central pore to form connexons. Each gap junction intercellular channel is formed by the conjunction of 2 connexons.

#### **Connexin 36 Antibody (C-term) - References**

de Brouwer, A.P., et al., Hum. Genet. 112(2):156-163 (2003).  
Belluardo, N., et al., J. Neurosci. Res. 57(5):740-752 (1999).