

Connexin 31 Antibody (C-term)
Purified Rabbit Polyclonal Antibody (Pab)
Catalog # AP1553c**Specification**

Connexin 31 Antibody (C-term) - Product Information

Application	WB,E
Primary Accession	O75712
Reactivity	Human
Host	Rabbit
Clonality	Polyclonal
Isotype	Rabbit IgG
Calculated MW	30818
Antigen Region	204-233

Connexin 31 Antibody (C-term) - Additional Information**Gene ID** 2707**Other Names**

Gap junction beta-3 protein, Connexin-31, Cx31, GJB3, CX31

Target/Specificity

This Connexin 31 Antibody antibody is generated from rabbits immunized with a KLH conjugated synthetic peptide between 204~233 amino acids from the C-terminal region of human GJB3.

Dilution

WB~~1:1000

E~~Use at an assay dependent concentration.

Format

Purified polyclonal antibody supplied in PBS with 0.09% (W/V) sodium azide. This antibody is prepared by Saturated Ammonium Sulfate (SAS) precipitation followed by dialysis against PBS.

Storage

Maintain refrigerated at 2-8°C for up to 2 weeks. For long term storage store at -20°C in small aliquots to prevent freeze-thaw cycles.

Precautions

Connexin 31 Antibody (C-term) is for research use only and not for use in diagnostic or therapeutic procedures.

Connexin 31 Antibody (C-term) - Protein Information**Name** GJB3**Synonyms** CX31

Function One gap junction consists of a cluster of closely packed pairs of transmembrane channels, the connexons, through which materials of low MW diffuse from one cell to a neighboring cell.

Cellular Location

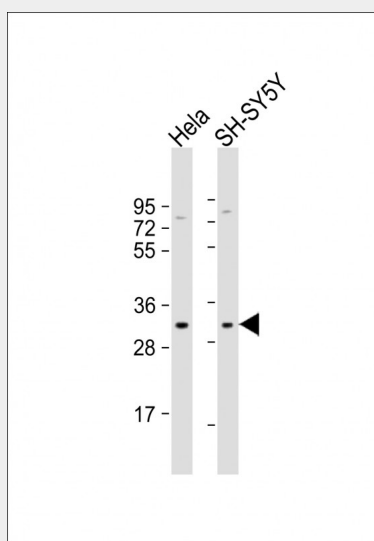
Cell membrane; Multi-pass membrane protein. Cell junction, gap junction

Connexin 31 Antibody (C-term) - Protocols

Provided below are standard protocols that you may find useful for product applications.

- [Western Blot](#)
- [Blocking Peptides](#)
- [Dot Blot](#)
- [Immunohistochemistry](#)
- [Immunofluorescence](#)
- [Immunoprecipitation](#)
- [Flow Cytometry](#)
- [Cell Culture](#)

Connexin 31 Antibody (C-term) - Images



All lanes : Anti-GJB3 Antibody (C211) at 1:1000 dilution Lane 1: HeLa whole cell lysate Lane 2: SH-SY5Y whole cell lysate Lysates/proteins at 20 µg per lane. Secondary Goat Anti-Rabbit IgG, (H+L), Peroxidase conjugated at 1/10000 dilution. Predicted band size : 31 kDa Blocking/Dilution buffer: 5% NFDM/TBST.

Connexin 31 Antibody (C-term) - Background

Gap junctions are conduits that allow the direct cell-to-cell passage of small cytoplasmic molecules, including ions, metabolic intermediates, and second messengers, and thereby mediate intercellular metabolic and electrical communication. Gap junction channels consist of connexin protein subunits, which are encoded by a multigene family. GJBs (gap-junction proteins or connexins) play crucial functional roles associated with these channels. Defects in GJB3 have been linked to erythrokeratoderma variabilis (EKV) is an autosomal dominant genodermatosis characterized by transient figurate red patches or hyperkeratosis. Mutations in GJB2 have also been associated with genetically derived hearing impairments, including autosomal recessive nonsyndromic deafness.

Connexin 31 Antibody (C-term) - References

- Plantard, L., et al., Hum. Mol. Genet. 12(24):3287-3294 (2003).
Rouan, F., et al., Exp. Dermatol. 12(2):191-197 (2003).
Mhatre, A.N., et al., Clin. Genet. 63(2):154-159 (2003).
Diestel, S., et al., Biochem. Biophys. Res. Commun. 296(3):721-728 (2002).
Di, W.L., et al., Hum. Mol. Genet. 11(17):2005-2014 (2002).