

VILIP3 Antibody (N-term)
Purified Rabbit Polyclonal Antibody (Pab)
Catalog # AP1563a**Specification**

VILIP3 Antibody (N-term) - Product Information

Application	WB, IHC-P,E
Primary Accession	P37235
Reactivity	Human, Mouse
Host	Rabbit
Clonality	Polyclonal
Isotype	Rabbit IgG
Antigen Region	2-32

VILIP3 Antibody (N-term) - Additional Information**Gene ID** 3241**Other Names**

Hippocalcin-like protein 1, Calcium-binding protein BDR-1, HLP2, Visinin-like protein 3, VILIP-3, HPCAL1, BDR1

Target/Specificity

This VILIP3 antibody is generated from rabbits immunized with a KLH conjugated synthetic peptide between 2-32 amino acids from the N-terminal region of human VILIP3.

DilutionWB~~1:1000
IHC-P~~1:50~100**Format**

Purified polyclonal antibody supplied in PBS with 0.09% (W/V) sodium azide. This antibody is prepared by Saturated Ammonium Sulfate (SAS) precipitation followed by dialysis against PBS.

Storage

Maintain refrigerated at 2-8°C for up to 2 weeks. For long term storage store at -20°C in small aliquots to prevent freeze-thaw cycles.

Precautions

VILIP3 Antibody (N-term) is for research use only and not for use in diagnostic or therapeutic procedures.

VILIP3 Antibody (N-term) - Protein Information**Name** HPCAL1**Synonyms** BDR1

Function May be involved in the calcium-dependent regulation of rhodopsin phosphorylation.

Cellular Location

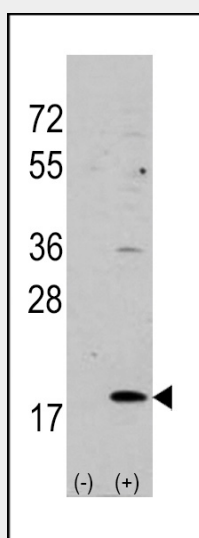
Membrane; Lipid-anchor

VILIP3 Antibody (N-term) - Protocols

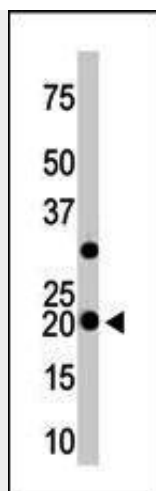
Provided below are standard protocols that you may find useful for product applications.

- [Western Blot](#)
- [Blocking Peptides](#)
- [Dot Blot](#)
- [Immunohistochemistry](#)
- [Immunofluorescence](#)
- [Immunoprecipitation](#)
- [Flow Cytometry](#)
- [Cell Culture](#)

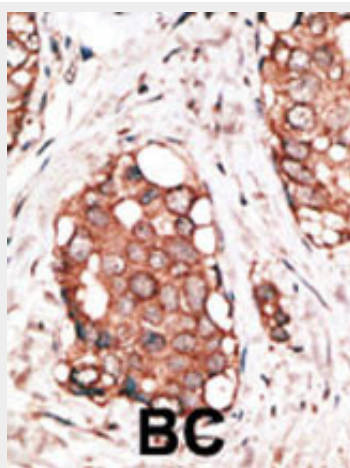
VILIP3 Antibody (N-term) - Images



Western blot analysis of VILIP3 (arrow) using rabbit polyclonal VILIP3 Antibody (N-term) (Cat.#AP1563a). 293 cell lysates (2 ug/lane) either nontransfected (Lane 1) or transiently transfected with the VILIP3 gene (Lane 2) (Origene Technologies).



The anti-VILIP3 Pab (Cat. #AP1563a) is used in Western blot to detect VILIP3 in mouse cerebellum tissue lysate.



Formalin-fixed and paraffin-embedded human cancer tissue reacted with the primary antibody, which was peroxidase-conjugated to the secondary antibody, followed by AEC staining. This data demonstrates the use of this antibody for immunohistochemistry; clinical relevance has not been evaluated. BC = breast carcinoma

VILIP3 Antibody (N-term) - Background

VILIP3 is a member of neuron-specific calcium-binding proteins family found in the retina and brain. It is highly similar to human hippocalcin protein and nearly identical to the rat and mouse hippocalcin like-1 proteins. It may be involved in the calcium-dependent regulation of rhodopsin phosphorylation and may be of relevance for neuronal signalling in the central nervous system. There are two alternatively spliced transcript variants of this gene, with multiple polyadenylation sites. Transcript variant 1 utilizes a different exon and also lacks one exon in the 5' UTR, as compared to variant 2; thus, the encoded protein is the same.

VILIP3 Antibody (N-term) - References

Braunewell, K., et al., Dement Geriatr Cogn Disord 12(2):110-116 (2001). Bernstein, H.G., et al., J Neurocytol 28(8):655-662 (1999). Kobayashi, M., et al., Biochim. Biophys. Acta 1222(3):515-518 (1994). Hidaka, H., et al., Neurosci. Res. 16(2):73-77 (1993). Ivings, L., et al., Biochem. J. 363 (Pt 3), 599-608 (2002).