

Calmodulin Antibody (C-term)
Purified Rabbit Polyclonal Antibody (Pab)
Catalog # AP1570b**Specification**

Calmodulin Antibody (C-term) - Product Information

Application	WB, IHC-P,E
Primary Accession	P62158
Other Accession	P62155 , P62161 , P62160 , P62204 , Q6PI52 , P62149 , P62157 , Q6YNX6 , P0DP23 , P0DP26 , P0DP29 , P0DP33 , P0DP24 , P0DP27 , P0DP30 , P0DP25 , P0DP28 , P0DP31 , P0DP34 , P0DP35
Reactivity	Human, Mouse, Rat
Predicted	Xenopus, Bovine, Chicken, Zebrafish, Rabbit, Sheep
Host	Rabbit
Clonality	Polyclonal
Isotype	Rabbit IgG
Antigen Region	117-149

Calmodulin Antibody (C-term) - Additional Information**Other Names**

Calmodulin, CaM, CALM1, CALM, CAM, CAM1

Target/Specificity

This Calmodulin antibody is generated from rabbits immunized with a KLH conjugated synthetic peptide between 117-149 amino acids from the C-terminal region of human Calmodulin.

Dilution

WB~~1:2000

IHC-P~~1:250

E~~Use at an assay dependent concentration.

Format

Purified polyclonal antibody supplied in PBS with 0.09% (W/V) sodium azide. This antibody is purified through a protein A column, followed by peptide affinity purification.

Storage

Maintain refrigerated at 2-8°C for up to 2 weeks. For long term storage store at -20°C in small aliquots to prevent freeze-thaw cycles.

Precautions

Calmodulin Antibody (C-term) is for research use only and not for use in diagnostic or therapeutic procedures.

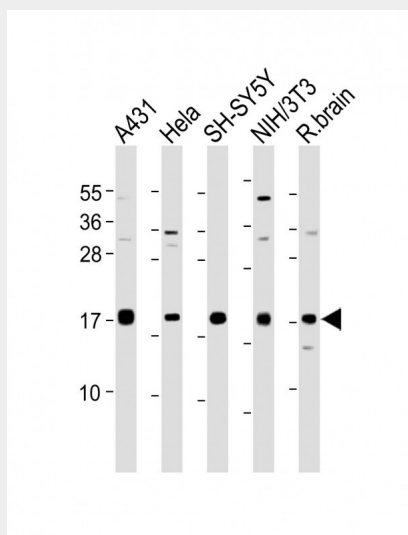
Calmodulin Antibody (C-term) - Protein Information

Calmodulin Antibody (C-term) - Protocols

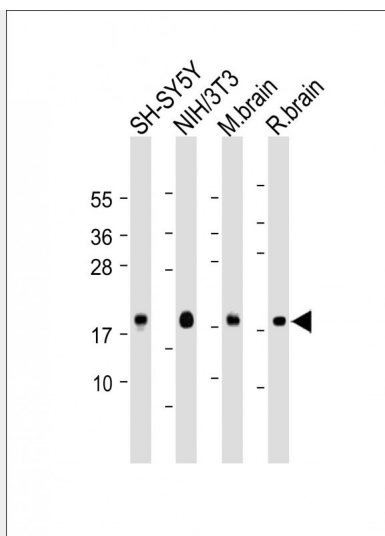
Provided below are standard protocols that you may find useful for product applications.

- [Western Blot](#)
- [Blocking Peptides](#)
- [Dot Blot](#)
- [Immunohistochemistry](#)
- [Immunofluorescence](#)
- [Immunoprecipitation](#)
- [Flow Cytometry](#)
- [Cell Culture](#)

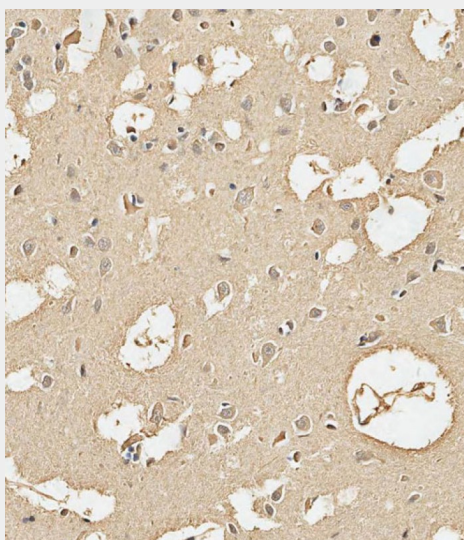
Calmodulin Antibody (C-term) - Images



All lanes : Anti-hCalmodulin-D132 at 1:2000 dilution Lane 1: A431 whole cell lysate Lane 2: HeLa whole cell lysate Lane 3: SH-SY5Y whole cell lysate Lane 4: NIH/3T3 whole cell lysate Lane 5: Rat brain lysate Lysates/proteins at 20 µg per lane. Secondary Goat Anti-Rabbit IgG, (H+L), Peroxidase conjugated at 1/10000 dilution. Predicted band size : 17 kDa Blocking/Dilution buffer: 5% NFDM/TBST.



All lanes : Anti-Calmodulin Antibody at 1:2000 dilution Lane 1: SH-SY5Y whole cell lysate Lane 2: NIH/3T3 whole cell lysate Lane 3: Mouse brain lysate Lane 4: Rat brain lysate Lysates/proteins at 20 µg per lane. Secondary Goat Anti-Rabbit IgG, (H+L), Peroxidase conjugated at 1/10000 dilution. Predicted band size : 17 kDa Blocking/Dilution buffer: 5% NFDM/TBST.



AP1570b staining hCalmodulin-D132 in human brain tissue sections by Immunohistochemistry (IHC-P - paraformaldehyde-fixed, paraffin-embedded sections). Samples were incubated with primary antibody (1/250) for 1 hours at room temperature. A undiluted biotinylated goat polyvalent antibody was used as the secondary antibody.

Calmodulin Antibody (C-term) - Background

Calmodulin is the archetype of the family of calcium-modulated proteins of which nearly 20 members have been found. They are identified by their occurrence in the cytosol or on membranes facing the cytosol and by a high affinity for calcium. Calmodulin contains 149 amino acids and has 4 calcium-binding domains. Its functions include roles in growth and the cell cycle as well as in signal transduction and the synthesis and release of neurotransmitters.

Calmodulin Antibody (C-term) - References

Radding, W., et al., AIDS Res. Hum. Retroviruses 16(15):1519-1525 (2000).
Wang, D., et al., J. Neurochem. 75(2):763-771 (2000).

Toutenhoofd, S.L., et al., Cell Calcium 23(5):323-338 (1998).

Matoba, R., et al., Gene 146(2):199-207 (1994).

Berchtold, M.W., et al., Genomics 16(2):461-465 (1993).

Calmodulin Antibody (C-term) - Citations

- [Target identification by chromatographic co-elution: monitoring of drug-protein interactions without immobilization or chemical derivatization.](#)