

**PFN2 Antibody (C-term)**  
**Affinity Purified Rabbit Polyclonal Antibody (Pab)**  
**Catalog # AP16001b**

**Specification**

---

**PFN2 Antibody (C-term) - Product Information**

Application	WB,E
Primary Accession	<a href="#">P35080</a>
Other Accession	<a href="#">O9EPC6</a> , <a href="#">O9JIV2</a> , <a href="#">O4R4P8</a> , <a href="#">O09430</a> , <a href="#">NP_444252.1</a> , <a href="#">NP_002619.1</a>
Reactivity	Human
Predicted	Bovine, Monkey, Mouse, Rat
Host	Rabbit
Clonality	Polyclonal
Isotype	Rabbit IgG
Calculated MW	15046
Antigen Region	110-139

**PFN2 Antibody (C-term) - Additional Information**

**Gene ID** 5217

**Other Names**

Profilin-2, Profilin II, PFN2

**Target/Specificity**

This PFN2 antibody is generated from rabbits immunized with a KLH conjugated synthetic peptide between 110-139 amino acids from the C-terminal region of human PFN2.

**Dilution**

WB~~1:1000

E~~Use at an assay dependent concentration.

**Format**

Purified polyclonal antibody supplied in PBS with 0.09% (W/V) sodium azide. This antibody is purified through a protein A column, followed by peptide affinity purification.

**Storage**

Maintain refrigerated at 2-8°C for up to 2 weeks. For long term storage store at -20°C in small aliquots to prevent freeze-thaw cycles.

**Precautions**

PFN2 Antibody (C-term) is for research use only and not for use in diagnostic or therapeutic procedures.

**PFN2 Antibody (C-term) - Protein Information**

**Name** PFN2

**Function** Binds to actin and affects the structure of the cytoskeleton. At high concentrations, profilin prevents the polymerization of actin, whereas it enhances it at low concentrations. By binding to PIP2, it inhibits the formation of IP3 and DG.

**Cellular Location**

Cytoplasm, cytoskeleton.

**Tissue Location**

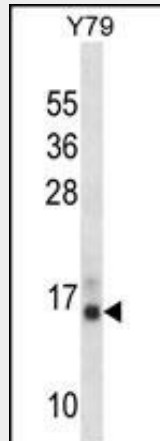
Highly expressed in brain, skeletal muscle and kidney and less strongly in heart, placenta, lung and liver

**PFN2 Antibody (C-term) - Protocols**

Provided below are standard protocols that you may find useful for product applications.

- [Western Blot](#)
- [Blocking Peptides](#)
- [Dot Blot](#)
- [Immunohistochemistry](#)
- [Immunofluorescence](#)
- [Immunoprecipitation](#)
- [Flow Cytometry](#)
- [Cell Culture](#)

**PFN2 Antibody (C-term) - Images**



PFN2 Antibody (C-term) (Cat. #AP16001b) western blot analysis in Y79 cell line lysates (35ug/lane). This demonstrates the PFN2 antibody detected the PFN2 protein (arrow).

**PFN2 Antibody (C-term) - Background**

The protein encoded by this gene is a ubiquitous actin monomer-binding protein belonging to the profilin family. It is thought to regulate actin polymerization in response to extracellular signals. There are two alternatively spliced transcript variants encoding different isoforms described for this gene.

**PFN2 Antibody (C-term) - References**

Shao, J., et al. Mol. Cell. Biol. 28(17):5196-5208(2008)  
Rikova, K., et al. Cell 131(6):1190-1203(2007)  
Xu, J., et al. Cell. Signal. 19(7):1575-1582(2007)  
Stelzl, U., et al. Cell 122(6):957-968(2005)  
Lederer, M., et al. J. Cell. Sci. 118 (PT 2), 331-341 (2005) :