

**ARRDC1 Antibody (Center)**  
**Affinity Purified Rabbit Polyclonal Antibody (Pab)**  
**Catalog # AP16008c**

**Specification**

---

**ARRDC1 Antibody (Center) - Product Information**

Application	WB,E
Primary Accession	<a href="#">Q8N5I2</a>
Other Accession	<a href="#">NP_689498.1</a>
Reactivity	Mouse
Host	Rabbit
Clonality	Polyclonal
Isotype	Rabbit IgG
Antigen Region	136-164

**ARRDC1 Antibody (Center) - Additional Information**

**Gene ID** 92714

**Other Names**

Arrestin domain-containing protein 1, ARRDC1

**Target/Specificity**

This ARRDC1 antibody is generated from rabbits immunized with a KLH conjugated synthetic peptide between 136-164 amino acids from the Central region of human ARRDC1.

**Dilution**

WB~~1:1000

**Format**

Purified polyclonal antibody supplied in PBS with 0.09% (W/V) sodium azide. This antibody is purified through a protein A column, followed by peptide affinity purification.

**Storage**

Maintain refrigerated at 2-8°C for up to 2 weeks. For long term storage store at -20°C in small aliquots to prevent freeze-thaw cycles.

**Precautions**

ARRDC1 Antibody (Center) is for research use only and not for use in diagnostic or therapeutic procedures.

**ARRDC1 Antibody (Center) - Protein Information**

**Name** ARRDC1 ([HGNC:28633](#))

**Function** Functions as an adapter recruiting ubiquitin-protein ligases to their specific substrates (PubMed:[23886940](#), PubMed:[27462458](#)). Through an ubiquitination-dependent mechanism plays for instance a role in the incorporation of SLC11A2 into extracellular vesicles (PubMed:[27462458](#)).

More generally, plays a role in the extracellular transport of proteins between cells through the release in the extracellular space of microvesicles (PubMed:[22315426](#)). By participating in the ITCH-mediated ubiquitination and subsequent degradation of NOTCH1, negatively regulates the NOTCH signaling pathway (PubMed:[23886940](#)).

#### **Cellular Location**

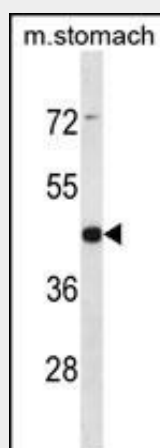
Cell membrane. Note=Also found in extracellular vesicles different from exosomes.

#### **ARRDC1 Antibody (Center) - Protocols**

Provided below are standard protocols that you may find useful for product applications.

- [Western Blot](#)
- [Blocking Peptides](#)
- [Dot Blot](#)
- [Immunohistochemistry](#)
- [Immunofluorescence](#)
- [Immunoprecipitation](#)
- [Flow Cytometry](#)
- [Cell Culture](#)

#### **ARRDC1 Antibody (Center) - Images**



ARRDC1 Antibody (Center) (Cat. #AP16008c) western blot analysis in mouse stomach tissue lysates (35ug/lane). This demonstrates the ARRDC1 antibody detected the ARRDC1 protein (arrow).

#### **ARRDC1 Antibody (Center) - Background**

ARRDC1 belongs to the arrestin family of proteins.

#### **ARRDC1 Antibody (Center) - References**

Humphray, S.J., et al. Nature 429(6990):369-374(2004)