

CLIP4 Antibody (Center)
Affinity Purified Rabbit Polyclonal Antibody (Pab)
Catalog # AP16009c**Specification**

CLIP4 Antibody (Center) - Product Information

Application	WB,E
Primary Accession	Q8N3C7
Other Accession	NP_078968.3
Reactivity	Human
Host	Rabbit
Clonality	Polyclonal
Isotype	Rabbit IgG
Calculated MW	76317
Antigen Region	333-361

CLIP4 Antibody (Center) - Additional Information**Gene ID** 79745**Other Names**

CAP-Gly domain-containing linker protein 4, Restin-like protein 2, CLIP4, RSNL2

Target/Specificity

This CLIP4 antibody is generated from rabbits immunized with a KLH conjugated synthetic peptide between 333-361 amino acids from the Central region of human CLIP4.

Dilution

WB~~1:1000

Format

Purified polyclonal antibody supplied in PBS with 0.09% (W/V) sodium azide. This antibody is purified through a protein A column, followed by peptide affinity purification.

Storage

Maintain refrigerated at 2-8°C for up to 2 weeks. For long term storage store at -20°C in small aliquots to prevent freeze-thaw cycles.

Precautions

CLIP4 Antibody (Center) is for research use only and not for use in diagnostic or therapeutic procedures.

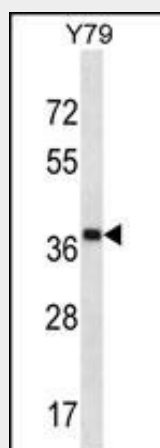
CLIP4 Antibody (Center) - Protein Information**Name** CLIP4**Synonyms** RSNL2

CLIP4 Antibody (Center) - Protocols

Provided below are standard protocols that you may find useful for product applications.

- [Western Blot](#)
- [Blocking Peptides](#)
- [Dot Blot](#)
- [Immunohistochemistry](#)
- [Immunofluorescence](#)
- [Immunoprecipitation](#)
- [Flow Cytometry](#)
- [Cell Culture](#)

CLIP4 Antibody (Center) - Images



CLIP4 Antibody (Center) (Cat. #AP16009c) western blot analysis in Y79 cell line lysates (35ug/lane). This demonstrates the CLIP4 antibody detected the CLIP4 protein (arrow).

CLIP4 Antibody (Center) - Background

UBASH3A, ubiquitin associated and SH3 domain containing, A, interferes with CBL-mediated down-regulation and degradation of receptor-type tyrosine kinases. Promotes accumulation of activated target receptors, such as T-cell receptors, EGFR and PDGFRB, on the cell surface (referenced from Swiss Prot).

CLIP4 Antibody (Center) - References

Gerhard, D.S., et al. Genome Res. 14 (10B), 2121-2127 (2004) :