

FAU Antibody (N-term)
Purified Rabbit Polyclonal Antibody (Pab)
Catalog # AP1600a**Specification**

FAU Antibody (N-term) - Product Information

Application	IHC-P, WB,E
Primary Accession	P35544
Reactivity	Human
Host	Rabbit
Clonality	Polyclonal
Isotype	Rabbit IgG
Antigen Region	1-30

FAU Antibody (N-term) - Additional Information**Other Names**

Ubiquitin-like protein FUBI, FAU

Target/Specificity

This FAU antibody is generated from rabbits immunized with a KLH conjugated synthetic peptide between 1-30 amino acids from the N-terminal region of human FAU.

Dilution

IHC-P~~1:50~100

WB~~1:1000

E~~Use at an assay dependent concentration.

Format

Purified polyclonal antibody supplied in PBS with 0.09% (W/V) sodium azide. This antibody is prepared by Saturated Ammonium Sulfate (SAS) precipitation followed by dialysis against PBS.

Storage

Maintain refrigerated at 2-8°C for up to 2 weeks. For long term storage store at -20°C in small aliquots to prevent freeze-thaw cycles.

Precautions

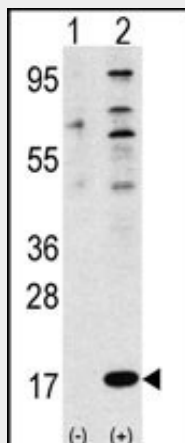
FAU Antibody (N-term) is for research use only and not for use in diagnostic or therapeutic procedures.

FAU Antibody (N-term) - Protein Information**FAU Antibody (N-term) - Protocols**

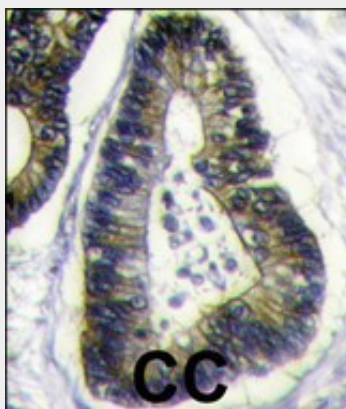
Provided below are standard protocols that you may find useful for product applications.

- [Western Blot](#)
- [Blocking Peptides](#)
- [Dot Blot](#)
- [Immunohistochemistry](#)
- [Immunofluorescence](#)
- [Immunoprecipitation](#)
- [Flow Cytometry](#)
- [Cell Culture](#)

FAU Antibody (N-term) - Images



Western blot analysis of FUBI Antibody (N-term) polyclonal antibody (Cat.#AP1600a) (arrow). 293 cell lysates (2 ug/lane) either nontransfected (Lane 1) or transiently transfected with the FUBI gene (Lane 2) (Origene Technologies).



Formalin-fixed and paraffin-embedded human colon carcinoma reacted with FUBI Antibody (N-term) (Cat.#AP1600a), which was peroxidase-conjugated to the secondary antibody, followed by DAB staining. This data demonstrates the use of this antibody for immunohistochemistry; clinical relevance has not been evaluated.

FAU Antibody (N-term) - Background

FUBI is the cellular homolog of the fox sequence in the Finkel-Biskis-Reilly murine sarcoma virus (FBR-MuSV). It is a fusion protein consisting of the ubiquitin-like protein fubi at the N terminus and ribosomal protein S30 at the C terminus. It has been proposed that the fusion protein is post-translationally processed to generate free fubi and free ribosomal protein S30. Fubi is a member of the ubiquitin family, and ribosomal protein S30 belongs to the S30E family of ribosomal proteins. Whereas the function of fubi is currently unknown, ribosomal protein S30 is a component of the 40S subunit of the cytoplasmic ribosome.

FAU Antibody (N-term) - References

Rossman, T.G., et al., *Oncogene* 22(12):1817-1821 (2003).
Kenmochi, N., et al., *Genome Res.* 8(5):509-523 (1998).
Vladimirov, S.N., et al., *Eur. J. Biochem.* 239(1):144-149 (1996).
Kas, K., et al., *Genomics* 17(2):387-392 (1993).
Michiels, L., et al., *Oncogene* 8(9):2537-2546 (1993).