

FAU Antibody (C-term)
Purified Rabbit Polyclonal Antibody (Pab)
Catalog # AP1600b**Specification**

FAU Antibody (C-term) - Product Information

Application	IHC-P, WB,E
Primary Accession	P62861
Other Accession	P62864 , P62863 , P62862 , P62860 , P62866 , NP_001988 , G1T8A2
Reactivity	Human, Mouse, Rat
Predicted	Bovine, Hamster, Pig, Rabbit
Host	Rabbit
Clonality	Polyclonal
Isotype	Rabbit IgG
Calculated MW	14390
Antigen Region	29-59

FAU Antibody (C-term) - Additional Information**Gene ID** 2197**Other Names**

40S ribosomal protein S30, FAU

Target/Specificity

This FAU antibody is generated from rabbits immunized with a KLH conjugated synthetic peptide between 29-59 amino acids from the C-terminal region of human FAU.

Dilution

IHC-P~~1:50~100

WB~~1:2000

E~~Use at an assay dependent concentration.

Format

Purified polyclonal antibody supplied in PBS with 0.09% (W/V) sodium azide. This antibody is prepared by Saturated Ammonium Sulfate (SAS) precipitation followed by dialysis against PBS.

Storage

Maintain refrigerated at 2-8°C for up to 2 weeks. For long term storage store at -20°C in small aliquots to prevent freeze-thaw cycles.

Precautions

FAU Antibody (C-term) is for research use only and not for use in diagnostic or therapeutic procedures.

FAU Antibody (C-term) - Protein Information

Name FAU ([HGNC:3597](#))

Function [Ubiquitin-like protein FUBI]: May have pro-apoptotic activity.

Cellular Location

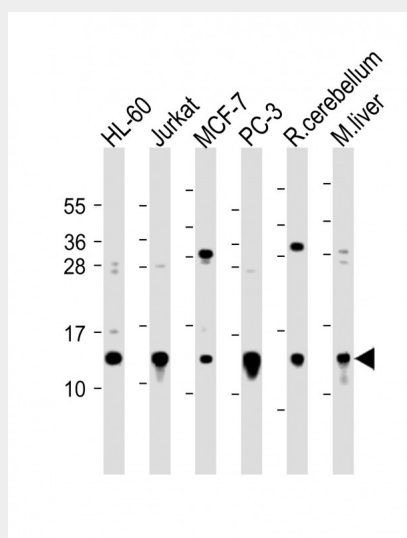
[Small ribosomal subunit protein eS30]: Cytoplasm. Nucleus

FAU Antibody (C-term) - Protocols

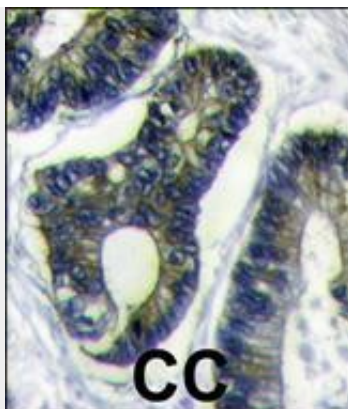
Provided below are standard protocols that you may find useful for product applications.

- [Western Blot](#)
- [Blocking Peptides](#)
- [Dot Blot](#)
- [Immunohistochemistry](#)
- [Immunofluorescence](#)
- [Immunoprecipitation](#)
- [Flow Cytometry](#)
- [Cell Culture](#)

FAU Antibody (C-term) - Images



All lanes : Anti-FUBI Antibody (C-term) at 1:2000 dilution Lane 1: HL-60 whole cell lysate Lane 2: Jurkat whole cell lysate Lane 3: MCF-7 whole cell lysate Lane 4: PC-3 whole cell lysate Lane 5: rat cerebellum lysate Lane 6: mouse liver lysate Lysates/proteins at 20 µg per lane. Secondary Goat Anti-Rabbit IgG, (H+L), Peroxidase conjugated at 1/10000 dilution. Predicted band size : 7 kDa Blocking/Dilution buffer: 5% NFDM/TBST.



Formalin-fixed and paraffin-embedded human colon carcinoma reacted with FUBI Antibody (C-term)(Cat.#AP1600b), which was peroxidase-conjugated to the secondary antibody, followed by DAB staining. This data demonstrates the use of this antibody for immunohistochemistry; clinical relevance has not been evaluated.

FAU Antibody (C-term) - Background

This gene is the cellular homolog of the fox sequence in the Finkel-Biskis-Reilly murine sarcoma virus (FBR-MuSV). It encodes a fusion protein consisting of the ubiquitin-like protein fubi at the N terminus and ribosomal protein S30 at the C terminus. It has been proposed that the fusion protein is post-translationally processed to generate free fubi and free ribosomal protein S30. Fubi is a member of the ubiquitin family, and ribosomal protein S30 belongs to the S30E family of ribosomal proteins. Whereas the function of fubi is currently unknown, ribosomal protein S30 is a component of the 40S subunit of the cytoplasmic ribosome. Pseudogenes derived from this gene are present in the genome. Similar to ribosomal protein S30, ribosomal proteins S27a and L40 are synthesized as fusion proteins with ubiquitin.

FAU Antibody (C-term) - References

- Rossman, T.G., et al., *Oncogene* 22(12):1817-1821 (2003).
- Kenmochi, N., et al., *Genome Res.* 8(5):509-523 (1998).
- Vladimirov, S.N., et al., *Eur. J. Biochem.* 239(1):144-149 (1996).
- Kas, K., et al., *Genomics* 17(2):387-392 (1993).
- Michiels, L., et al., *Oncogene* 8(9):2537-2546 (1993).