

PBX2 Antibody (Center)
Affinity Purified Rabbit Polyclonal Antibody (Pab)
Catalog # AP16016C

Specification

PBX2 Antibody (Center) - Product Information

Application	WB,E
Primary Accession	P40425
Other Accession	O35984 , NP_002577.2
Reactivity	Human, Mouse
Host	Rabbit
Clonality	Polyclonal
Isotype	Rabbit IgG
Antigen Region	181-210

PBX2 Antibody (Center) - Additional Information

Gene ID 5089

Other Names

Pre-B-cell leukemia transcription factor 2, Homeobox protein PBX2, Protein G17, PBX2, G17

Target/Specificity

This PBX2 antibody is generated from rabbits immunized with a KLH conjugated synthetic peptide between 181-210 amino acids from the Central region of human PBX2.

Dilution

WB~~1:2000

E~~Use at an assay dependent concentration.

Format

Purified polyclonal antibody supplied in PBS with 0.09% (W/V) sodium azide. This antibody is purified through a protein A column, followed by peptide affinity purification.

Storage

Maintain refrigerated at 2-8°C for up to 2 weeks. For long term storage store at -20°C in small aliquots to prevent freeze-thaw cycles.

Precautions

PBX2 Antibody (Center) is for research use only and not for use in diagnostic or therapeutic procedures.

PBX2 Antibody (Center) - Protein Information

Name PBX2

Synonyms G17

Function Transcriptional activator that binds the sequence 5'- ATCAATCAA-3'. Activates transcription of PF4 in complex with MEIS1.

Cellular Location

Nucleus.

Tissue Location

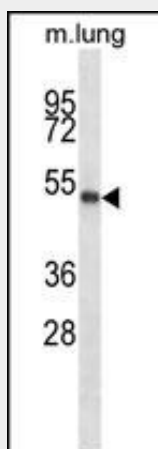
Ubiquitously expressed.

PBX2 Antibody (Center) - Protocols

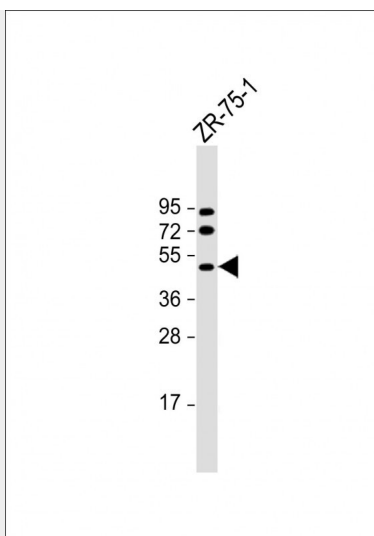
Provided below are standard protocols that you may find useful for product applications.

- [Western Blot](#)
- [Blocking Peptides](#)
- [Dot Blot](#)
- [Immunohistochemistry](#)
- [Immunofluorescence](#)
- [Immunoprecipitation](#)
- [Flow Cytometry](#)
- [Cell Culture](#)

PBX2 Antibody (Center) - Images



PBX2 Antibody (Center) (Cat. #AP16016c) western blot analysis in mouse lung tissue lysates (35ug/lane). This demonstrates the PBX2 antibody detected the PBX2 protein (arrow).



Anti-PBX2 Antibody (Center) at 1:2000 dilution + ZR-75-1 whole cell lysate Lysates/proteins at 20 µg per lane. Secondary Goat Anti-Rabbit IgG, (H+L), Peroxidase conjugated at 1/10000 dilution. Predicted band size : 46 kDa Blocking/Dilution buffer: 5% NFDM/TBST.

PBX2 Antibody (Center) - Background

This gene encodes a ubiquitously expressed member of the TALE/PBX homeobox family. It was identified by its similarity to a homeobox gene which is involved in t(1;19) translocation in acute pre-B-cell leukemias. This protein is a transcriptional activator which binds to the TLX1 promoter. The gene is located within the major histocompatibility complex (MHC) on chromosome 6. [provided by RefSeq].

PBX2 Antibody (Center) - References

Bailey, S.D., et al. Diabetes Care 33(10):2250-2253(2010)
Ucisik-Akkaya, E., et al. Mol. Hum. Reprod. 16(10):770-777(2010)
Qiu, Y., et al. Int. J. Oncol. 36(3):651-663(2010)
Ban, H.J., et al. BMC Genet. 11, 26 (2010) :
Talmud, P.J., et al. Am. J. Hum. Genet. 85(5):628-642(2009)