

Mouse Cdkl5 Antibody (C-term)
Affinity Purified Rabbit Polyclonal Antibody (Pab)
Catalog # AP16017b

Specification

Mouse Cdkl5 Antibody (C-term) - Product Information

Application	WB,E
Primary Accession	Q3UTQ8
Reactivity	Mouse
Host	Rabbit
Clonality	Polyclonal
Isotype	Rabbit IgG
Calculated MW	105489
Antigen Region	730-758

Mouse Cdkl5 Antibody (C-term) - Additional Information

Gene ID 382253

Other Names

Cyclin-dependent kinase-like 5, Cdkl5

Target/Specificity

This Mouse Cdkl5 antibody is generated from rabbits immunized with a KLH conjugated synthetic peptide between 730-758 amino acids from the C-terminal region of mouse Cdkl5.

Dilution

WB~~1:1000

E~~Use at an assay dependent concentration.

Format

Purified polyclonal antibody supplied in PBS with 0.09% (W/V) sodium azide. This antibody is purified through a protein A column, followed by peptide affinity purification.

Storage

Maintain refrigerated at 2-8°C for up to 2 weeks. For long term storage store at -20°C in small aliquots to prevent freeze-thaw cycles.

Precautions

Mouse Cdkl5 Antibody (C-term) is for research use only and not for use in diagnostic or therapeutic procedures.

Mouse Cdkl5 Antibody (C-term) - Protein Information

Name Cdkl5 {ECO:0000312|MGI:MGI:1278336}

Function Mediates phosphorylation of MECP2. May regulate ciliogenesis.

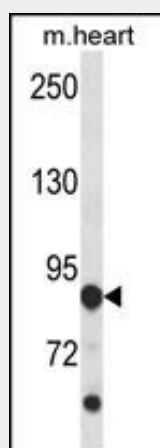
Cellular Location

Nucleus {ECO:0000250|UniProtKB:O76039}. Cytoplasm, cytoskeleton, cilium basal body {ECO:0000250|UniProtKB:O76039}. Cytoplasm, cytoskeleton, microtubule organizing center, centrosome {ECO:0000250|UniProtKB:O76039}

Mouse Cdkl5 Antibody (C-term) - Protocols

Provided below are standard protocols that you may find useful for product applications.

- [Western Blot](#)
- [Blocking Peptides](#)
- [Dot Blot](#)
- [Immunohistochemistry](#)
- [Immunofluorescence](#)
- [Immunoprecipitation](#)
- [Flow Cytometry](#)
- [Cell Culture](#)

Mouse Cdkl5 Antibody (C-term) - Images

Mouse Cdkl5 Antibody (C-term) (Cat. #AP16017b) western blot analysis in mouse heart tissue lysates (35ug/lane). This demonstrates the Cdkl5 antibody detected the Cdkl5 protein (arrow).

Mouse Cdkl5 Antibody (C-term) - Background

Cdkl5 mediates phosphorylation of MECP2 (By similarity).