

**Mouse Adck5 Antibody (N-term)**  
**Affinity Purified Rabbit Polyclonal Antibody (Pab)**  
**Catalog # AP16022A****Specification**

---

**Mouse Adck5 Antibody (N-term) - Product Information**

Application	WB,E
Primary Accession	<a href="#">Q80V03</a>
Other Accession	<a href="#">NP_766548.2</a>
Reactivity	Human
Host	Rabbit
Clonality	Polyclonal
Isotype	Rabbit IgG
Calculated MW	66654
Antigen Region	94-121

**Mouse Adck5 Antibody (N-term) - Additional Information****Gene ID** 268822**Other Names**

Uncharacterized aarF domain-containing protein kinase 5, 2711-, Adck5

**Target/Specificity**

This Mouse Adck5 antibody is generated from rabbits immunized with a KLH conjugated synthetic peptide between 94-121 amino acids from the N-terminal region of mouse Adck5.

**Dilution**

WB~~1:1000

E~~Use at an assay dependent concentration.

**Format**

Purified polyclonal antibody supplied in PBS with 0.09% (W/V) sodium azide. This antibody is purified through a protein A column, followed by peptide affinity purification.

**Storage**

Maintain refrigerated at 2-8°C for up to 2 weeks. For long term storage store at -20°C in small aliquots to prevent freeze-thaw cycles.

**Precautions**

Mouse Adck5 Antibody (N-term) is for research use only and not for use in diagnostic or therapeutic procedures.

**Mouse Adck5 Antibody (N-term) - Protein Information****Name** Adck5**Function** The function of this protein is not yet clear. It is not known if it has protein kinase

activity and what type of substrate it would phosphorylate (Ser, Thr or Tyr).

#### Cellular Location

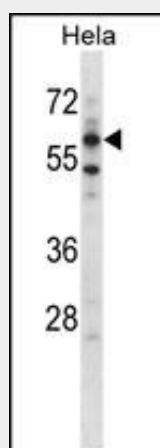
Membrane; Single-pass membrane protein

#### Mouse Adck5 Antibody (N-term) - Protocols

Provided below are standard protocols that you may find useful for product applications.

- [Western Blot](#)
- [Blocking Peptides](#)
- [Dot Blot](#)
- [Immunohistochemistry](#)
- [Immunofluorescence](#)
- [Immunoprecipitation](#)
- [Flow Cytometry](#)
- [Cell Culture](#)

#### Mouse Adck5 Antibody (N-term) - Images



Mouse Adck5 Antibody (N-term) (Cat. #AP16022a) western blot analysis in HeLa cell line lysates (35ug/lane). This demonstrates the Adck5 antibody detected the Adck5 protein (arrow).

#### Mouse Adck5 Antibody (N-term) - Background

The function of this protein is not yet clear. It is not known if it has protein kinase activity and what type of substrate it would phosphorylate (Ser, Thr or Tyr).

#### Mouse Adck5 Antibody (N-term) - References

Pagliarini, D.J., et al. Cell 134(1):112-123(2008)  
Roma, G., et al. Genome Res. 17(7):1051-1060(2007)  
Zambrowicz, B.P., et al. Proc. Natl. Acad. Sci. U.S.A. 100(24):14109-14114(2003)