

CHRD Antibody (Center)
Affinity Purified Rabbit Polyclonal Antibody (Pab)
Catalog # AP16028c**Specification**

CHRD Antibody (Center) - Product Information

| | |
|-------------------|-----------------------------|
| Application | WB,E |
| Primary Accession | O9H2X0 |
| Other Accession | NP_003732.2 |
| Reactivity | Mouse |
| Host | Rabbit |
| Clonality | Polyclonal |
| Isotype | Rabbit IgG |
| Calculated MW | 102032 |
| Antigen Region | 439-467 |

CHRD Antibody (Center) - Additional Information**Gene ID** 8646**Other Names**

Chordin, CHRD

Target/Specificity

This CHRD antibody is generated from rabbits immunized with a KLH conjugated synthetic peptide between 439-467 amino acids from the Central region of human CHRD.

Dilution

WB~~1:1000

E~~Use at an assay dependent concentration.

Format

Purified polyclonal antibody supplied in PBS with 0.09% (W/V) sodium azide. This antibody is purified through a protein A column, followed by peptide affinity purification.

Storage

Maintain refrigerated at 2-8°C for up to 2 weeks. For long term storage store at -20°C in small aliquots to prevent freeze-thaw cycles.

Precautions

CHRD Antibody (Center) is for research use only and not for use in diagnostic or therapeutic procedures.

CHRD Antibody (Center) - Protein Information**Name** CHRD**Function** Dorsalizing factor. Key developmental protein that dorsalizes early vertebrate

embryonic tissues by binding to ventralizing TGF-beta family bone morphogenetic proteins (BMPs) and sequestering them in latent complexes (By similarity).

Cellular Location

Secreted.

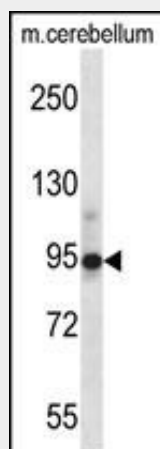
Tissue Location

Expressed at the highest level in liver.

CHRD Antibody (Center) - Protocols

Provided below are standard protocols that you may find useful for product applications.

- [Western Blot](#)
- [Blocking Peptides](#)
- [Dot Blot](#)
- [Immunohistochemistry](#)
- [Immunofluorescence](#)
- [Immunoprecipitation](#)
- [Flow Cytometry](#)
- [Cell Culture](#)

CHRD Antibody (Center) - Images

CHRD Antibody (Center) (Cat. #AP16028c) western blot analysis in mouse cerebellum tissue lysates (35ug/lane). This demonstrates the CHRD antibody detected the CHRD protein (arrow).

CHRD Antibody (Center) - Background

This gene encodes a secreted protein that dorsalizes early vertebrate embryonic tissues by binding to ventralizing TGF-beta-like bone morphogenetic proteins and sequestering them in latent complexes. The encoded protein may also have roles in organogenesis and during adulthood. Multiple transcript variants encoding distinct isoforms have been identified for this gene. Other alternative splice variants have been described but their full length sequence has not been determined.

CHRD Antibody (Center) - References

Bailey, S.D., et al. Diabetes Care 33(10):2250-2253(2010)
Yerges, L.M., et al. J. Bone Miner. Res. 24(12):2039-2049(2009)
Talmud, P.J., et al. Am. J. Hum. Genet. 85(5):628-642(2009)
Kwong, F.N., et al. J. Orthop. Res. 27(6):752-757(2009)
Kwong, F.N., et al. Int Orthop 33(1):281-288(2009)