

SMEK2 Antibody (C-term)
Affinity Purified Rabbit Polyclonal Antibody (Pab)
Catalog # AP16035b**Specification**

SMEK2 Antibody (C-term) - Product Information

Application	WB,E
Primary Accession	Q5MIZ7
Other Accession	NP_065196.1 , NP_001116436.1
Reactivity	Human
Host	Rabbit
Clonality	Polyclonal
Isotype	Rabbit IgG
Calculated MW	97458
Antigen Region	720-748

SMEK2 Antibody (C-term) - Additional Information**Gene ID** 57223**Other Names**

Serine/threonine-protein phosphatase 4 regulatory subunit 3B, SMEK homolog 2, SMEK2, KIAA1387, PP4R3B, PPP4R3B

Target/Specificity

This SMEK2 antibody is generated from rabbits immunized with a KLH conjugated synthetic peptide between 720-748 amino acids from the C-terminal region of human SMEK2.

Dilution

WB~~1:1000

Format

Purified polyclonal antibody supplied in PBS with 0.09% (W/V) sodium azide. This antibody is purified through a protein A column, followed by peptide affinity purification.

Storage

Maintain refrigerated at 2-8°C for up to 2 weeks. For long term storage store at -20°C in small aliquots to prevent freeze-thaw cycles.

Precautions

SMEK2 Antibody (C-term) is for research use only and not for use in diagnostic or therapeutic procedures.

SMEK2 Antibody (C-term) - Protein Information**Name** PPP4R3B ([HGNC:29267](#))**Function** Regulatory subunit of serine/threonine-protein phosphatase 4 (PP4). May regulate the

activity of PPP4C at centrosomal microtubule organizing centers.

Cellular Location

Cytoplasm. Cytoplasm, cytoskeleton, microtubule organizing center, centrosome. Nucleus Note=In interphase localized in the cytoplasm and (with higher levels) the nucleus. During metaphase located in pericentriolar regions

Tissue Location

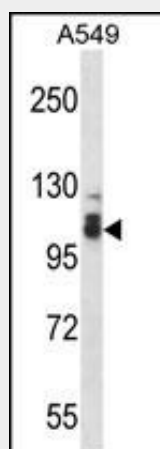
Moderately expressed in tissues and specific brain regions examined.

SMEK2 Antibody (C-term) - Protocols

Provided below are standard protocols that you may find useful for product applications.

- [Western Blot](#)
- [Blocking Peptides](#)
- [Dot Blot](#)
- [Immunohistochemistry](#)
- [Immunofluorescence](#)
- [Immunoprecipitation](#)
- [Flow Cytometry](#)
- [Cell Culture](#)

SMEK2 Antibody (C-term) - Images



SMEK2 Antibody (C-term) (Cat. #AP16035b) western blot analysis in A549 cell line lysates (35ug/lane). This demonstrates the SMEK2 antibody detected the SMEK2 protein (arrow).

SMEK2 Antibody (C-term) - Background

Regulatory subunit of serine/threonine-protein phosphatase 4 (PP4). May regulate the activity of PPP4C at centrosomal microtubule organizing centers.

SMEK2 Antibody (C-term) - References

- Chowdhury, D., et al. Mol. Cell 31(1):33-46(2008)
Ewing, R.M., et al. Mol. Syst. Biol. 3, 89 (2007) :
Beausoleil, S.A., et al. Nat. Biotechnol. 24(10):1285-1292(2006)
Gingras, A.C., et al. Mol. Cell Proteomics 4(11):1725-1740(2005)
Mendoza, M.C., et al. Mol. Cell. Biol. 25(17):7839-7853(2005)