

**SAP130 Antibody (C-term)**  
**Affinity Purified Rabbit Polyclonal Antibody (Pab)**  
**Catalog # AP16036B****Specification**

---

**SAP130 Antibody (C-term) - Product Information**

Application	WB,E
Primary Accession	<a href="#">O9H0E3</a>
Other Accession	<a href="#">O8BIH0</a> , <a href="#">O5F3U0</a> , <a href="#">NP_001139400.1</a> , <a href="#">NP_078821.2</a>
Reactivity	Human
Predicted	Chicken, Mouse
Host	Rabbit
Clonality	Polyclonal
Isotype	Rabbit IgG
Calculated MW	110324
Antigen Region	909-937

**SAP130 Antibody (C-term) - Additional Information**

**Gene ID** 79595

**Other Names**

Histone deacetylase complex subunit SAP130, 130 kDa Sin3-associated polypeptide, Sin3-associated polypeptide p130, SAP130

**Target/Specificity**

This SAP130 antibody is generated from rabbits immunized with a KLH conjugated synthetic peptide between 909-937 amino acids from the C-terminal region of human SAP130.

**Dilution**

WB~~1:1000

E~~Use at an assay dependent concentration.

**Format**

Purified polyclonal antibody supplied in PBS with 0.09% (W/V) sodium azide. This antibody is purified through a protein A column, followed by peptide affinity purification.

**Storage**

Maintain refrigerated at 2-8°C for up to 2 weeks. For long term storage store at -20°C in small aliquots to prevent freeze-thaw cycles.

**Precautions**

SAP130 Antibody (C-term) is for research use only and not for use in diagnostic or therapeutic procedures.

**SAP130 Antibody (C-term) - Protein Information**

## Name SAP130

**Function** Acts as a transcriptional repressor. May function in the assembly and/or enzymatic activity of the mSin3A corepressor complex or in mediating interactions between the complex and other regulatory complexes.

## Cellular Location

Nucleus.

## Tissue Location

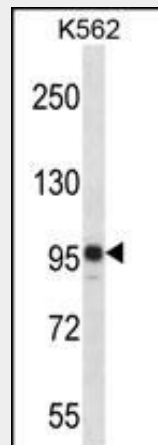
Expressed in various cancer cell lines.

## SAP130 Antibody (C-term) - Protocols

Provided below are standard protocols that you may find useful for product applications.

- [Western Blot](#)
- [Blocking Peptides](#)
- [Dot Blot](#)
- [Immunohistochemistry](#)
- [Immunofluorescence](#)
- [Immunoprecipitation](#)
- [Flow Cytometry](#)
- [Cell Culture](#)

## SAP130 Antibody (C-term) - Images



SAP130 Antibody (C-term) (Cat. #AP16036b) western blot analysis in K562 cell line lysates (35ug/lane). This demonstrates the SAP130 antibody detected the SAP130 protein (arrow).

## SAP130 Antibody (C-term) - Background

SAP130 is a subunit of the histone deacetylase (see HDAC1; MIM 601241)-dependent SIN3A (MIM 607776) corepressor complex (Fleischer et al., 2003 [PubMed 12724404]).

## SAP130 Antibody (C-term) - References

Rose, J.E., et al. Mol. Med. 16 (7-8), 247-253 (2010) ;  
Truty, M.J., et al. J. Biol. Chem. 284(10):6291-6300(2009)

Olsen, J.V., et al. Cell 127(3):635-648(2006)  
Fleischer, T.C., et al. Mol. Cell. Biol. 23(10):3456-3467(2003)  
Martinez, E., et al. Mol. Cell. Biol. 21(20):6782-6795(2001)