

STMN2 Antibody (C-term)
Affinity Purified Rabbit Polyclonal Antibody (Pab)
Catalog # AP16048b**Specification**

STMN2 Antibody (C-term) - Product Information

Application	WB,E
Primary Accession	Q93045
Other Accession	P21818 , P55821 , Q90987 , NP_008960.2
Reactivity	Human
Predicted	Chicken, Mouse, Rat
Host	Rabbit
Clonality	Polyclonal
Isotype	Rabbit IgG
Calculated MW	20828
Antigen Region	145-173

STMN2 Antibody (C-term) - Additional Information**Gene ID** 11075**Other Names**

Stathmin-2, Superior cervical ganglion-10 protein, Protein SCG10, STMN2, SCG10, SCGN10

Target/Specificity

This STMN2 antibody is generated from rabbits immunized with a KLH conjugated synthetic peptide between 145-173 amino acids from the C-terminal region of human STMN2.

Dilution

WB~~1:1000

E~~Use at an assay dependent concentration.

Format

Purified polyclonal antibody supplied in PBS with 0.09% (W/V) sodium azide. This antibody is purified through a protein A column, followed by peptide affinity purification.

Storage

Maintain refrigerated at 2-8°C for up to 2 weeks. For long term storage store at -20°C in small aliquots to prevent freeze-thaw cycles.

Precautions

STMN2 Antibody (C-term) is for research use only and not for use in diagnostic or therapeutic procedures.

STMN2 Antibody (C-term) - Protein Information**Name** STMN2

Synonyms SCG10, SCGN10

Function Regulator of microtubule stability. When phosphorylated by MAPK8, stabilizes microtubules and consequently controls neurite length in cortical neurons. In the developing brain, negatively regulates the rate of exit from multipolar stage and retards radial migration from the ventricular zone (By similarity).

Cellular Location

Cytoplasm. Cytoplasm, perinuclear region. Cell projection, growth cone. Membrane; Peripheral membrane protein; Cytoplasmic side. Cell projection, axon. Golgi apparatus. Endosome. Cell projection, lamellipodium. Note=Associated with punctate structures in the perinuclear cytoplasm, axons, and growth cones of developing neurons. SCG10 exists in both soluble and membrane-bound forms. Colocalized with CIB1 in neurites of developing hippocampal primary neurons (By similarity). Colocalized with CIB1 in the cell body, neuritis and growth cones of neurons. Colocalized with CIB1 to the leading edge of lamellipodia.

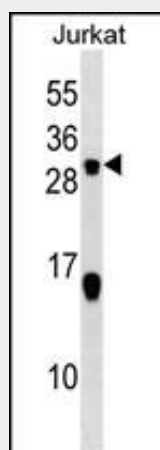
Tissue Location

Neuron specific.

STMN2 Antibody (C-term) - Protocols

Provided below are standard protocols that you may find useful for product applications.

- [Western Blot](#)
- [Blocking Peptides](#)
- [Dot Blot](#)
- [Immunohistochemistry](#)
- [Immunofluorescence](#)
- [Immunoprecipitation](#)
- [Flow Cytometry](#)
- [Cell Culture](#)

STMN2 Antibody (C-term) - Images

STMN2 Antibody (C-term) (Cat. #AP16048b) western blot analysis in Jurkat cell line lysates (35ug/lane). This demonstrates the STMN2 antibody detected the STMN2 protein (arrow).

STMN2 Antibody (C-term) - Background

This gene encodes a member of the stathmin family of

phosphoproteins. Stathmin proteins function in microtubule dynamics and signal transduction. The encoded protein plays a regulatory role in neuronal growth and is also thought to be involved in osteogenesis. Reductions in the expression of this gene have been associated with Down's syndrome and Alzheimer's disease. Alternatively spliced transcript variants have been observed for this gene. A pseudogene of this gene is located on the long arm of chromosome 6.

STMN2 Antibody (C-term) - References

Paradis, V., et al. Am. J. Pathol. 177(4):1791-1797(2010)
Rowe, D.D., et al. Brain Res. (2010) In press :
Alves, M.M., et al. Hum. Mol. Genet. 19(18):3642-3651(2010)
Xu, H., et al. J. Biol. Chem. 285(6):3548-3553(2010)
Mead, S., et al. Lancet Neurol 8(1):57-66(2009)